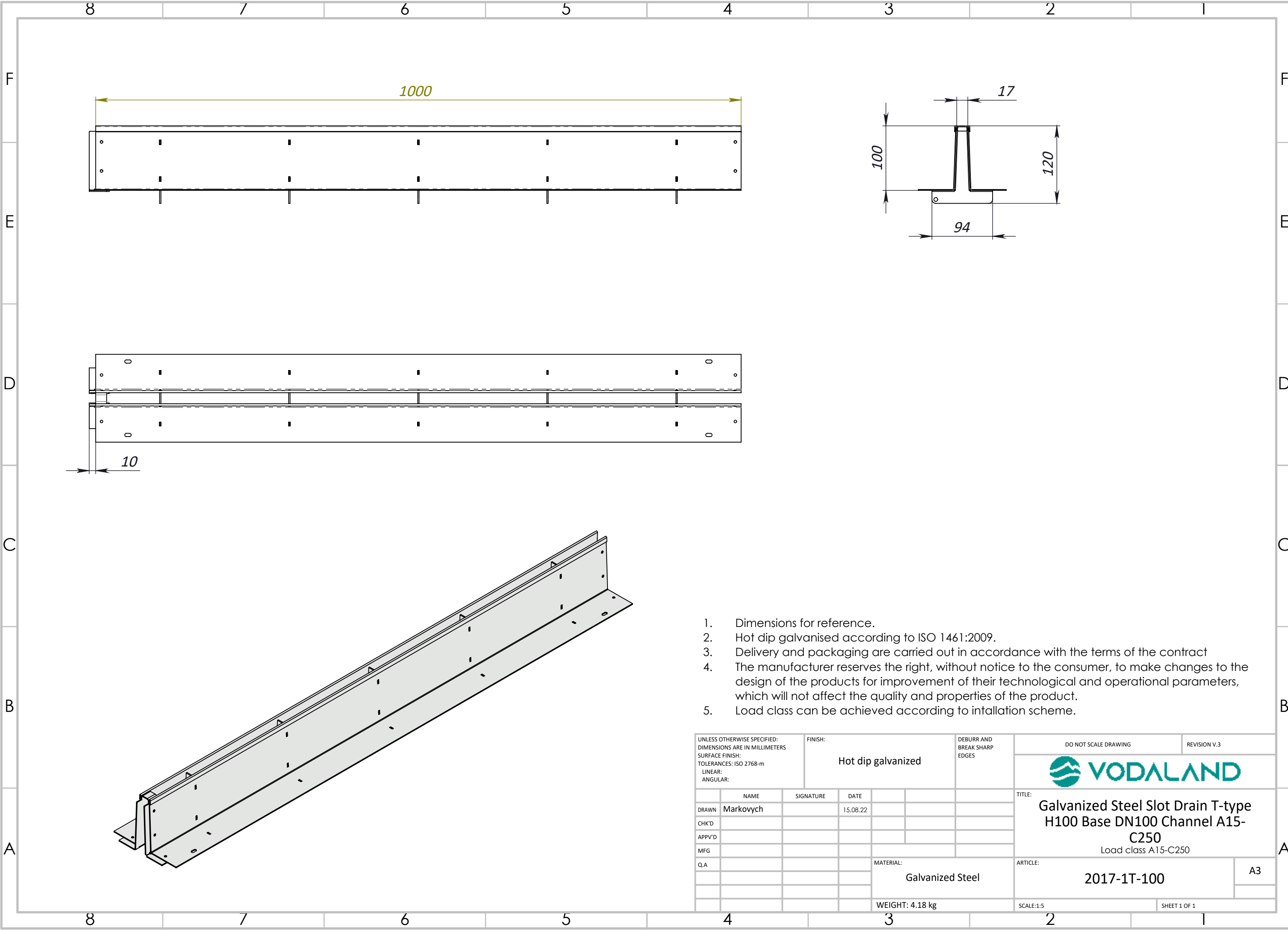



| Nº | Article | Name | Weight, kg |
|----|----------------|---|------------|
| 1 | 4000/125-1 | Concrete Drain Channel Base DN100 H125 with plastic inserts C250 | 23,9 |
| 2 | 400009/125-1 | Concrete Drain Channel Base DN100 H125 with plastic inserts vertical outlet 110 C250 | 23,3 |
| 3 | 400007/125-1 | Concrete Drain Channel Base DN100 H125 with plastic inserts reinforced C250 | 24,7 |
| 4 | 40000907/125-1 | Concrete Drain Channel Base DN100 H125 with plastic inserts vertical outlet 110 reinforced C250 | 24 |

1. Dimensions for reference
2. Delivery and packaging are carried out in accordance with the terms of the contract
3. The manufacturer reserves the right, without notice to the consumer, to make changes to the design of the products for improvement of their technological and operational parameters, which will not affect the quality and properties of the product
4. Deviation of the actual weight of the nominal can be up to 10%.

| | | | | | | | | | |
|--|--|-----------|--|------------------------------------|--|--|--|----------------|--|
| UNLESS OTHERWISE SPECIFIED: DIMENSIONS ARE IN MILLIMETERS SURFACE FINISH: TOLERANCES: ISO 2768 - C LINEAR: ANGULAR: | | FINISH: | | DEBURR AND BREAK SHARP EDGES | | DO NOT SCALE DRAWING | | REVISION | |
| DRAWN Olender | | SIGNATURE | | DATE 10.10.22 | | TITLE: Concrete Drain Channel Base DN100 H125 with plastic inserts C250 | | ARTICLE: A3 | |
| CHK'D Kyselytsia | | | | | | | | | |
| APPV'D Malynovskiy | | | | | | | | | |
| MFG | | | | | | | | | |
| Q.A | | | | | | MATERIAL: Concrete, Galvanized steel, Plastic | | | |
| | | | | | | WEIGHT: kg | | SCALE:1:5 | |
| | | | | | | | | SHEET 1 OF 1 | |



1. Dimensions for reference.
2. Hot dip galvanised according to ISO 1461:2009.
3. Delivery and packaging are carried out in accordance with the terms of the contract
4. The manufacturer reserves the right, without notice to the consumer, to make changes to the design of the products for improvement of their technological and operational parameters, which will not affect the quality and properties of the product.
5. Load class can be achieved according to intallation scheme.

| | | | | | | | | | | | |
|--|------|-----------|----------|-----------------------------------|--|------------------------------------|--|---|--|--------------|--|
| UNLESS OTHERWISE SPECIFIED: DIMENSIONS ARE IN MILLIMETERS SURFACE FINISH: TOLERANCES: ISO 2768-m LINEAR: ANGULAR: | | | | FINISH: Hot dip galvanized | | DEBURR AND BREAK SHARP EDGES | | DO NOT SCALE DRAWING | | REVISION V.3 | |
| | | | | | | | |  | | | |
| TITLE: | | | | | | | | Galvanized Steel Slot Drain T-type H100 Base DN100 Channel A15- C250 Load class A15-C250 | | | |
| DRAWN | NAME | SIGNATURE | DATE | | | | | | | | |
| CHK'D | | | 15.08.22 | | | | | | | | |
| APPV'D | | | | | | | | | | | |
| MFG | | | | | | | | | | | |
| Q.A | | | | MATERIAL: | | | | ARTICLE: | | A3 | |
| | | | | Galvanized Steel | | | | 2017-1T-100 | | | |
| | | | | | | | | | | | |
| | | | | WEIGHT: 4.18 kg | | | | SCALE:1:5 | | SHEET 1 OF 1 | |