
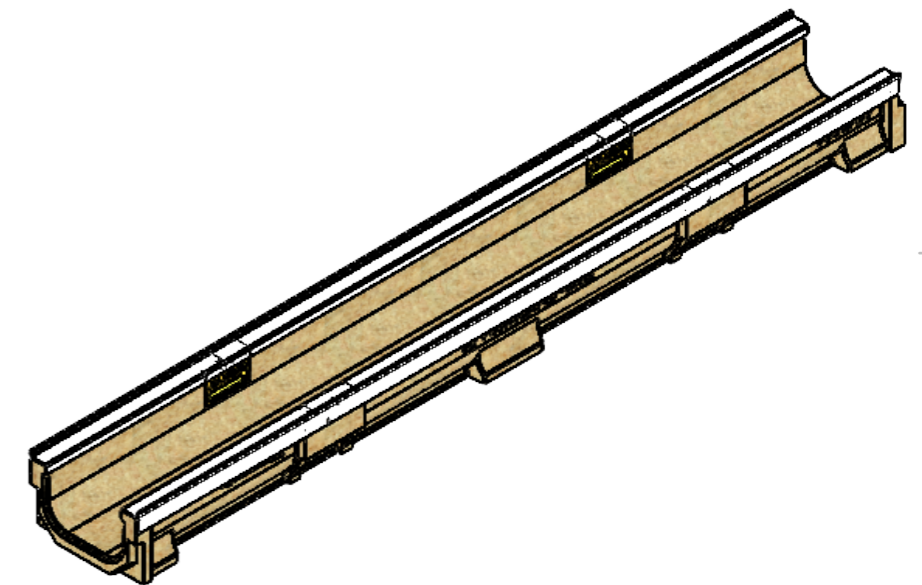
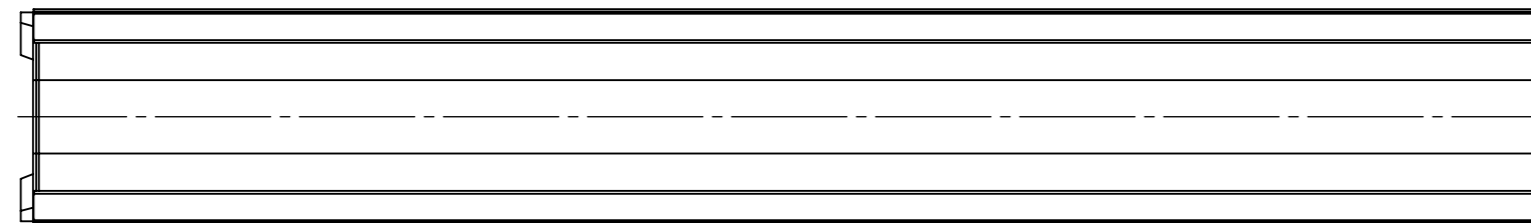
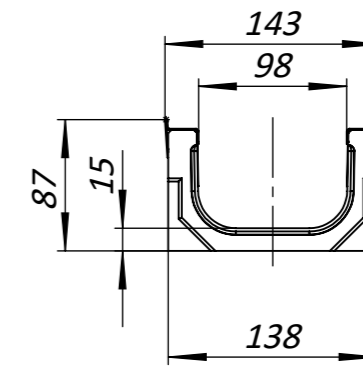
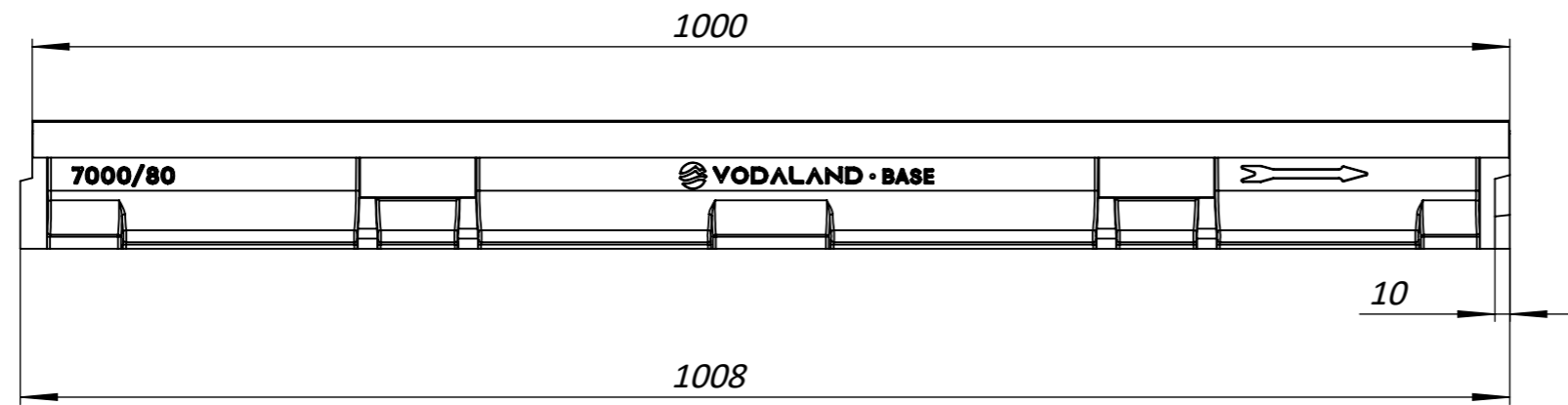



1. *Dimensions for reference*
2. *Delivery and packaging are carried out in accordance with the terms of the contract*
3. *The manufacturer reserves the right, without notice to the consumer, to make changes to the design of the products for improvement of their technological and operational parameters, which will not affect the quality and properties of the product*
4. *Deviation of the actual weight of the nominal can be up to 10%.*

UNLESS OTHERWISE SPECIFIED: DIMENSIONS ARE IN MILLIMETERS SURFACE FINISH: TOLERANCES: ISO 2768 - C LINEAR: ANGULAR:		FINISH:		DEBURR AND BREAK SHARP EDGES		DO NOT SCALE DRAWING		REVISION	
									
								TITLE: Polymer Concrete Drain Channel Base DN100 H60 reinforced C250	
						MATERIAL: Polymer Concrete, Steel		ARTICLE: 700007/60	
						WEIGHT: 6.80 kg		SCALE: 1:5	
								SHEET 1 OF 1	

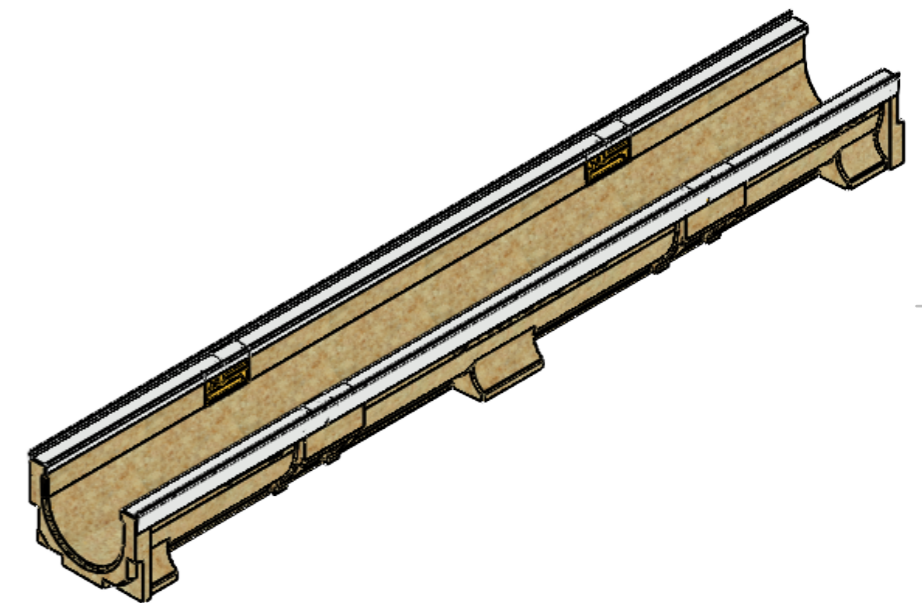
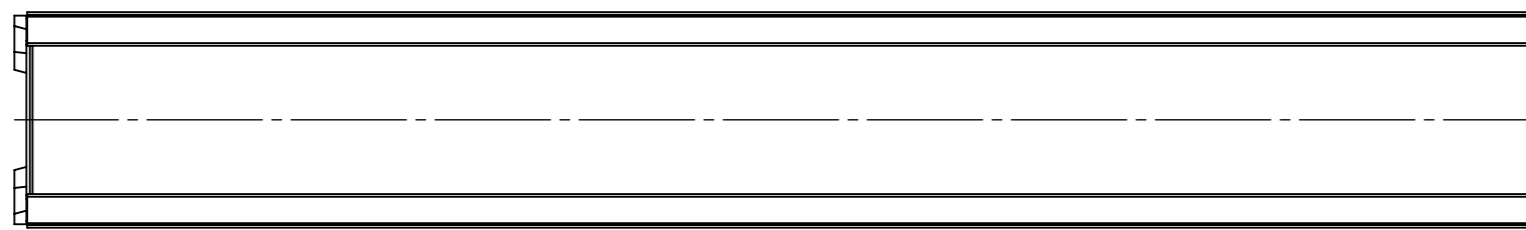
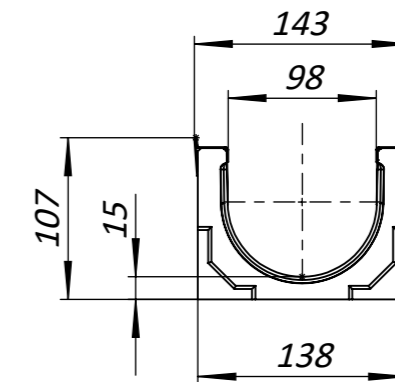
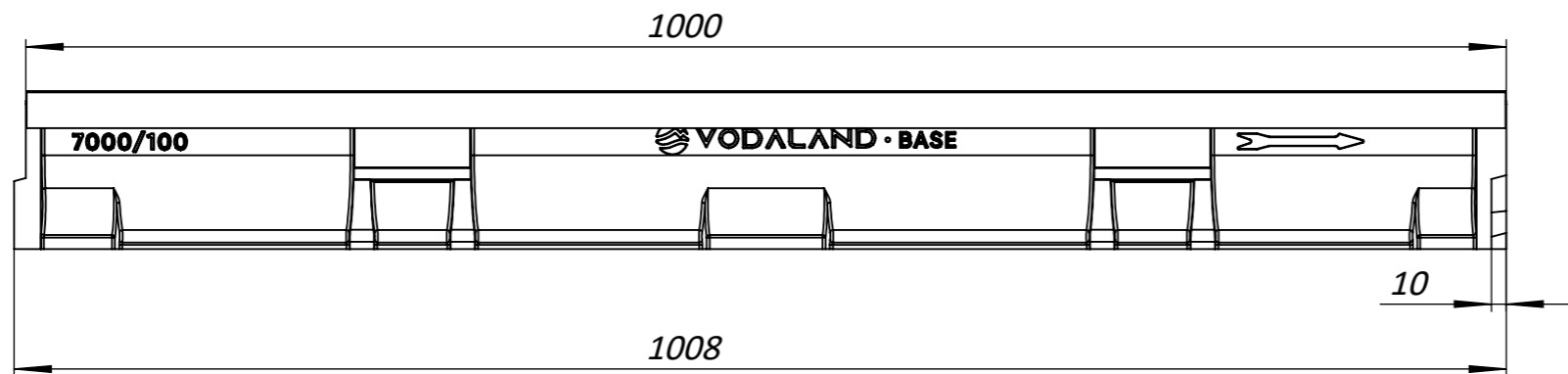
A3



1. Dimensions for reference
2. Delivery and packaging are carried out in accordance with the terms of the contract
3. The manufacturer reserves the right, without notice to the consumer, to make changes to the design of the products for improvement of their technological and operational parameters, which will not affect the quality and properties of the product
4. Deviation of the actual weight of the nominal can be up to 10%.

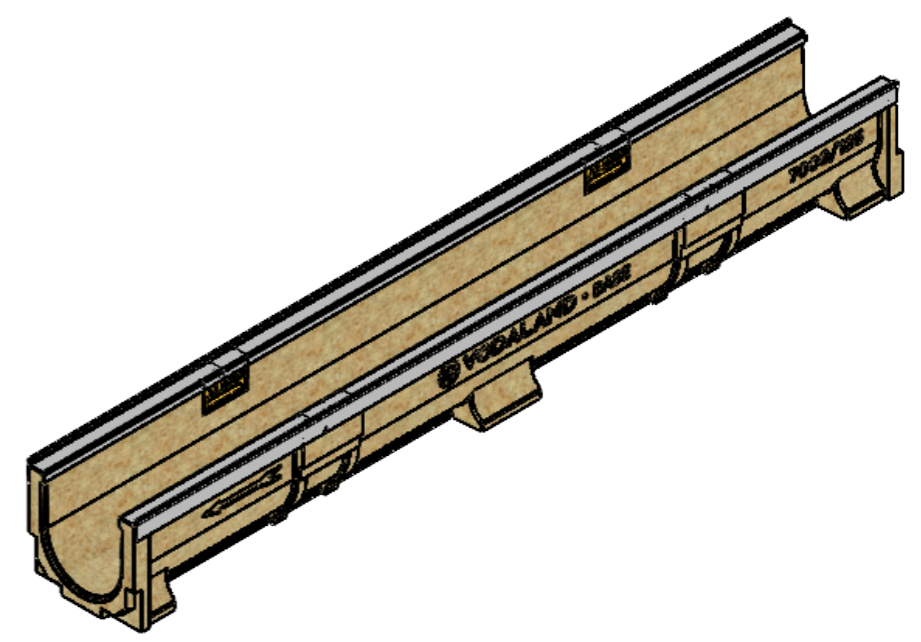
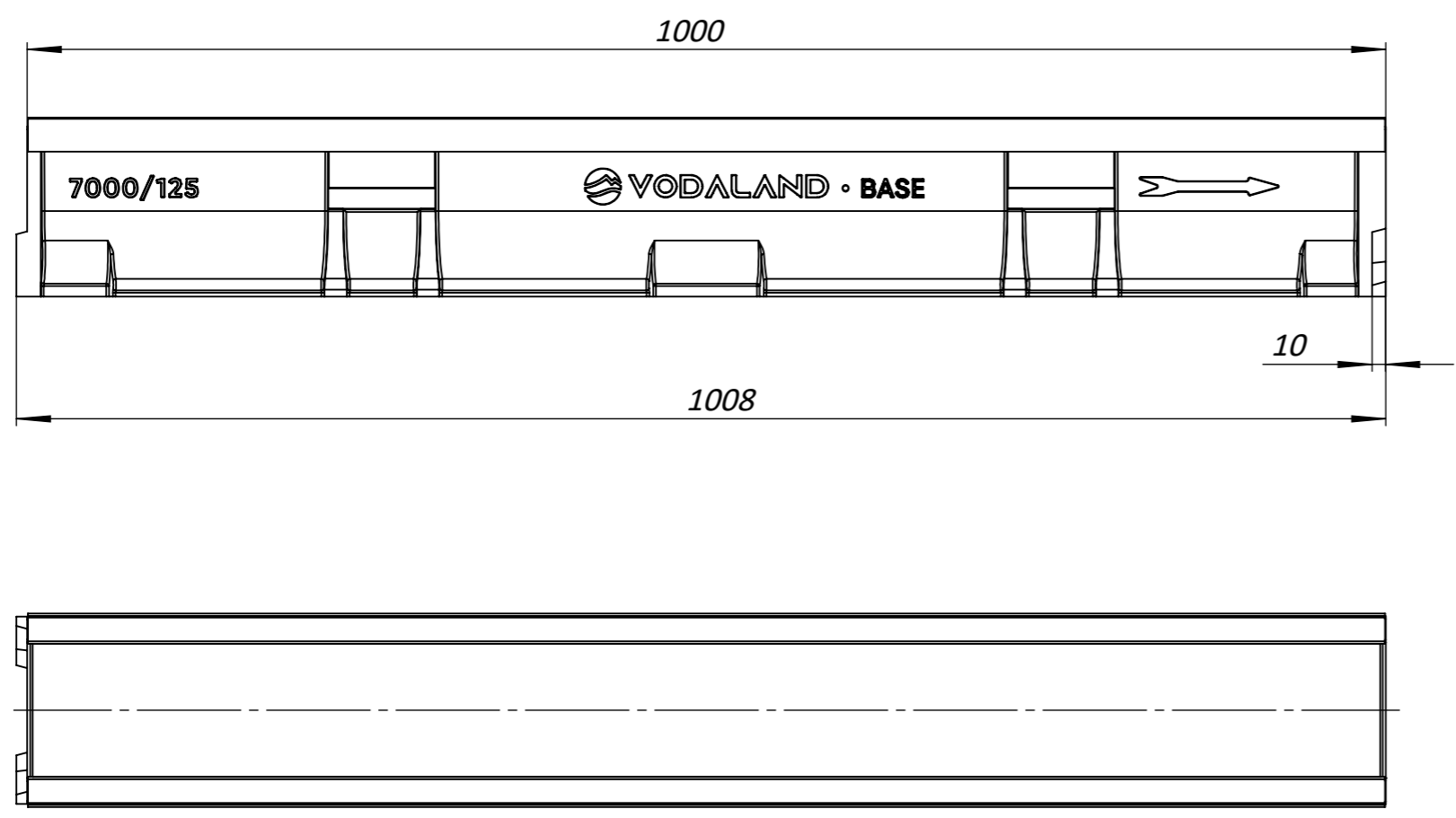
UNLESS OTHERWISE SPECIFIED: DIMENSIONS ARE IN MILLIMETERS SURFACE FINISH: TOLERANCES: ISO 2768 - C LINEAR: ANGULAR:		FINISH:		DEBURR AND BREAK SHARP EDGES		DO NOT SCALE DRAWING		REVISION	
									
								TITLE: Polymer Concrete Drain Channel Base DN100 H80 reinforced C250	
DRAWN	Kozak	SIGNATURE		DATE	06.07.22				
CHK'D	Kyselytsia								
APPV'D	I. Malynovskiy								
MFG									
Q.A						MATERIAL: Polymer Concrete, Steel		ARTICLE: 700007/80	
						WEIGHT: 7.32 kg		SCALE: 1:5	
								SHEET 1 OF 1	

A3



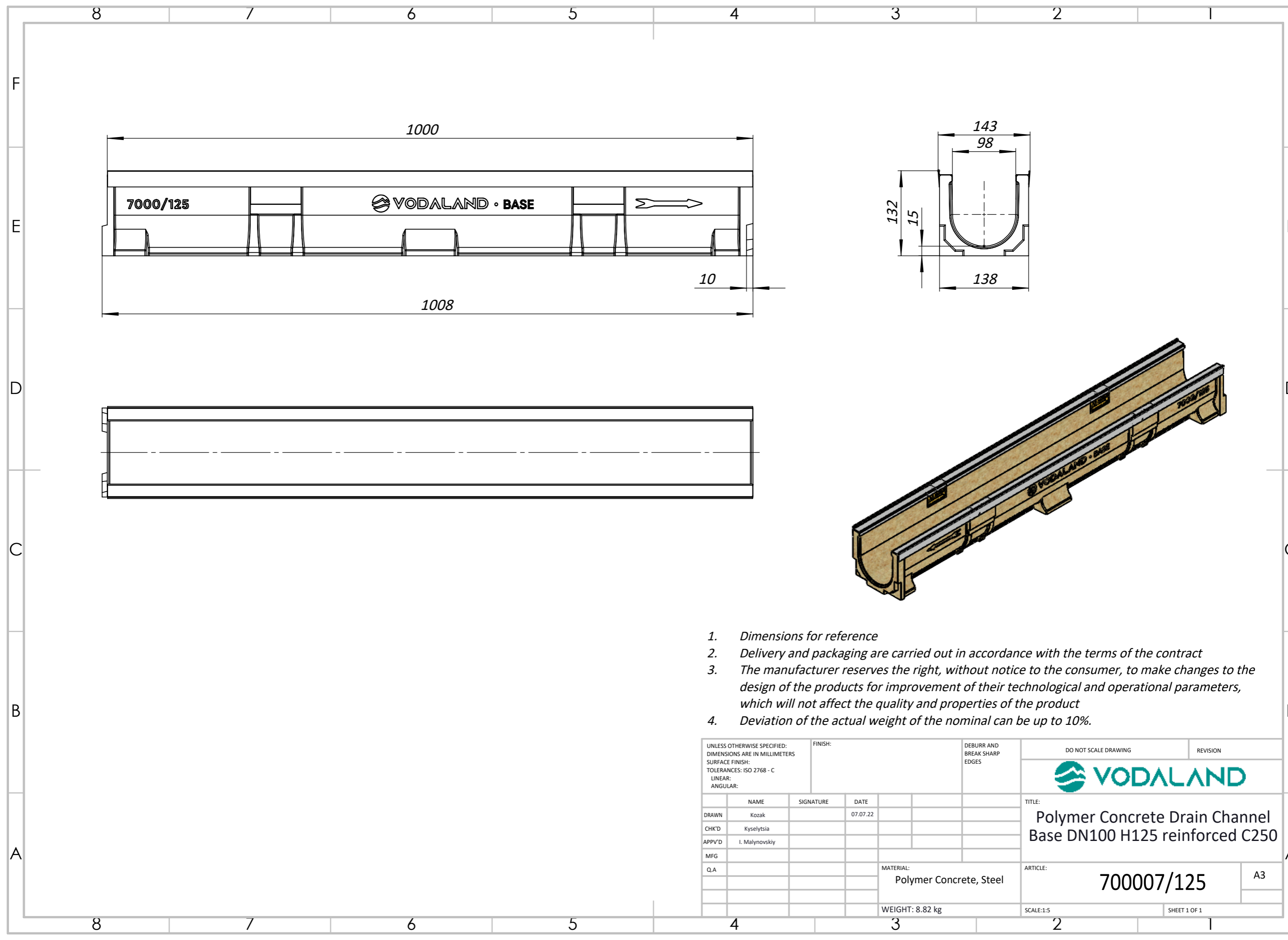
1. Dimensions for reference
2. Delivery and packaging are carried out in accordance with the terms of the contract
3. The manufacturer reserves the right, without notice to the consumer, to make changes to the design of the products for improvement of their technological and operational parameters, which will not affect the quality and properties of the product
4. Deviation of the actual weight of the nominal can be up to 10%.

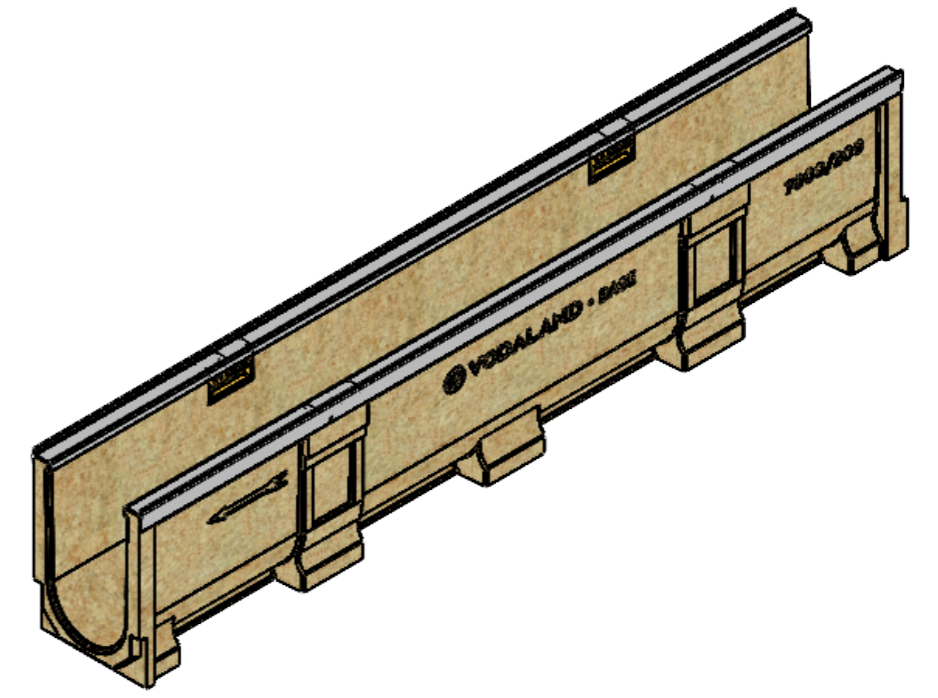
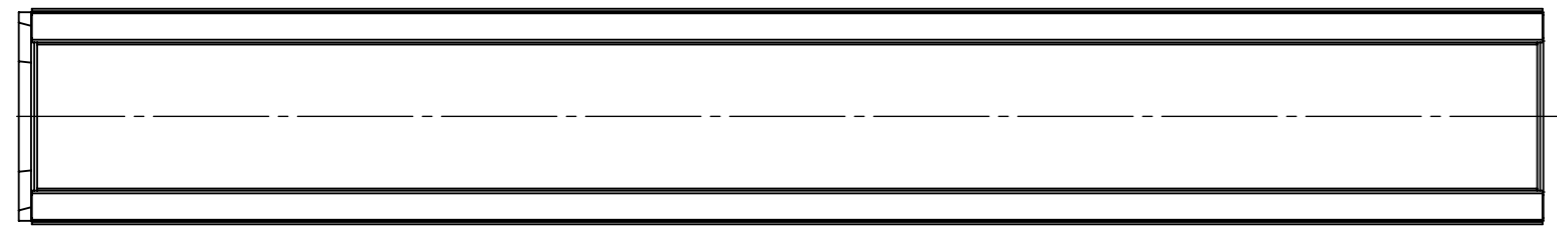
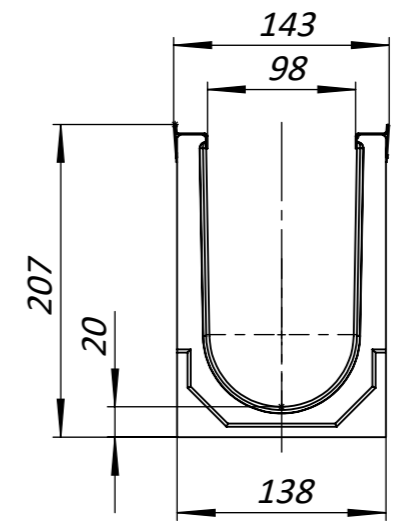
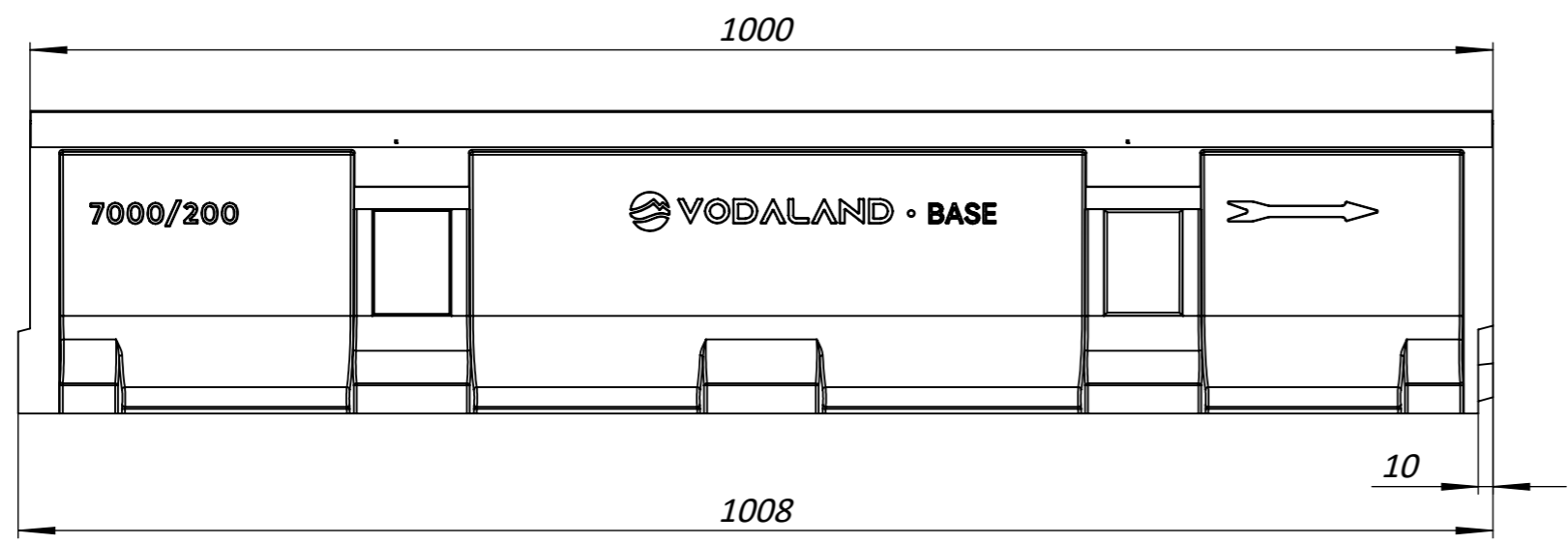
UNLESS OTHERWISE SPECIFIED: DIMENSIONS ARE IN MILLIMETERS SURFACE FINISH: TOLERANCES: ISO 2768 - C LINEAR: ANGULAR:		FINISH:		DEBURR AND BREAK SHARP EDGES		DO NOT SCALE DRAWING		REVISION	
DRAWN		Kozak		SIGNATURE		DATE		06.07.22	
CHK'D		Kyselytsia		SIGNATURE		DATE			
APPV'D		I. Malynovskiy		SIGNATURE		DATE			
MFG				SIGNATURE		DATE			
Q.A				SIGNATURE		DATE			
				MATERIAL:		Polymer Concrete, Steel		ARTICLE:	
				WEIGHT: 7.80 kg		SCALE: 1:5		SHEET 1 OF 1	
								TITLE:	
								Polymer Concrete Drain Channel Base DN100 H100 reinforced C250	
								ARTICLE:	
								700007/100	
								A3	



1. Dimensions for reference
2. Delivery and packaging are carried out in accordance with the terms of the contract
3. The manufacturer reserves the right, without notice to the consumer, to make changes to the design of the products for improvement of their technological and operational parameters, which will not affect the quality and properties of the product
4. Deviation of the actual weight of the nominal can be up to 10%.

UNLESS OTHERWISE SPECIFIED: DIMENSIONS ARE IN MILLIMETERS SURFACE FINISH: TOLERANCES: ISO 2768 - C LINEAR: ANGULAR:		FINISH:		DEBURR AND BREAK SHARP EDGES		DO NOT SCALE DRAWING		REVISION	
DRAWN		Kozak		SIGNATURE		DATE		07.07.22	
CHK'D		Kyselytsia		SIGNATURE		DATE			
APPV'D		I. Malynovskiy		SIGNATURE		DATE			
MFG				SIGNATURE		DATE			
Q.A				SIGNATURE		DATE			
				MATERIAL:		Polymer Concrete, Steel		ARTICLE:	
				WEIGHT: 8.82 kg		SCALE: 1:5		SHEET 1 OF 1	
								TITLE: Polymer Concrete Drain Channel Base DN100 H125 reinforced C250	
								ARTICLE: 700007/125	
								A3	



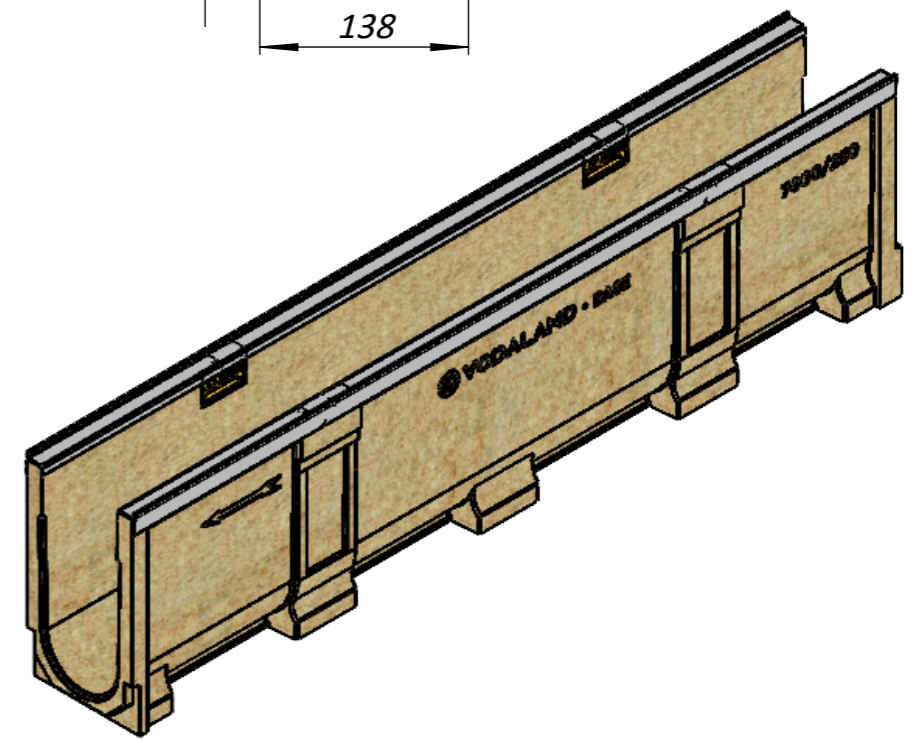
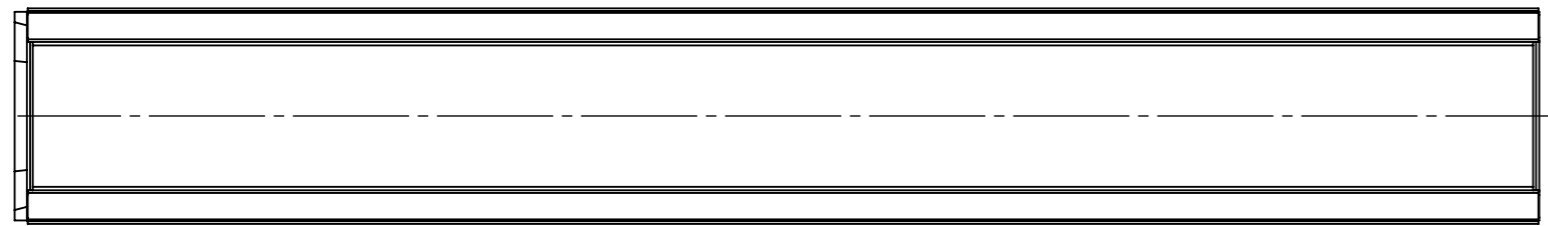
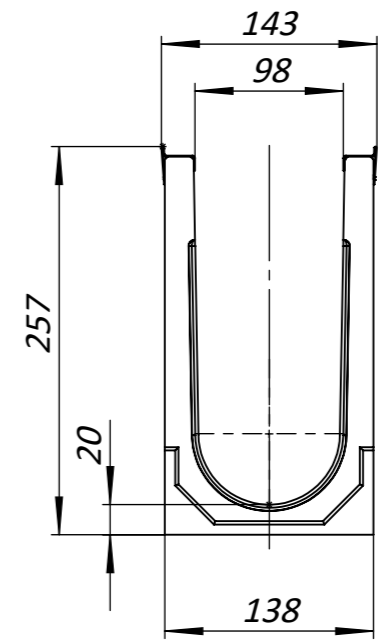
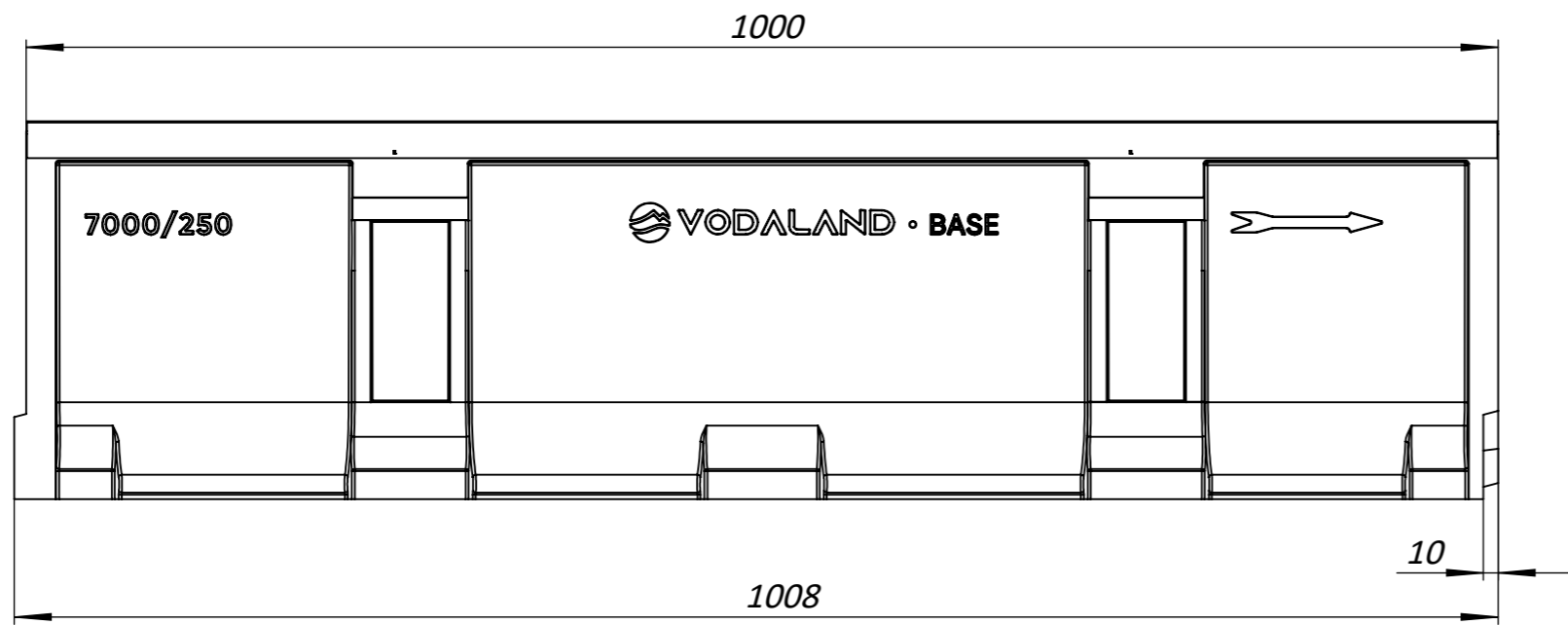


1. Dimensions for reference
2. Delivery and packaging are carried out in accordance with the terms of the contract
3. The manufacturer reserves the right, without notice to the consumer, to make changes to the design of the products for improvement of their technological and operational parameters, which will not affect the quality and properties of the product
4. Deviation of the actual weight of the nominal can be up to 10%.

UNLESS OTHERWISE SPECIFIED: DIMENSIONS ARE IN MILLIMETERS SURFACE FINISH: TOLERANCES: ISO 2768 - C LINEAR: ANGULAR:		FINISH:		DEBURR AND BREAK SHARP EDGES		DO NOT SCALE DRAWING		REVISION	
DRAWN		Kozak		SIGNATURE		DATE		07.07.22	
CHK'D		Kyselytsia		SIGNATURE		DATE			
APPV'D		I. Malynovskiy		SIGNATURE		DATE			
MFG				SIGNATURE		DATE			
Q.A				SIGNATURE		DATE			
				MATERIAL:		Polymer Concrete, Steel		TITLE:	
				WEIGHT: 14.31 kg		SCALE: 1:5		ARTICLE:	
								SHEET 1 OF 1	
								A3	
								700007/200	
								Polymer Concrete Drain Channel Base DN100 H200 reinforced C250	
								VODALAND	

8 7 6 5 4 3 2 1

F
E
D
C
B
A



1. Dimensions for reference
2. Delivery and packaging are carried out in accordance with the terms of the contract
3. The manufacturer reserves the right, without notice to the consumer, to make changes to the design of the products for improvement of their technological and operational parameters, which will not affect the quality and properties of the product
4. Deviation of the actual weight of the nominal can be up to 10%.

UNLESS OTHERWISE SPECIFIED: DIMENSIONS ARE IN MILLIMETERS SURFACE FINISH: TOLERANCES: ISO 2768 - C LINEAR: ANGULAR:		FINISH:		DEBURR AND BREAK SHARP EDGES		DO NOT SCALE DRAWING		REVISION	
DRAWN		Kozak		SIGNATURE		DATE		07.07.22	
CHK'D		Kyselytsia		SIGNATURE		DATE			
APPV'D		I. Malynovskiy		SIGNATURE		DATE			
MFG				SIGNATURE		DATE			
Q.A				SIGNATURE		DATE			
				MATERIAL:		Polymer Concrete, Steel		TITLE:	
				WEIGHT: 17.45 kg		SCALE: 1:5		ARTICLE:	
								SHEET 1 OF 1	
								A3	
								700007/250	
								Polymer Concrete Drain Channel Base DN100 H250 reinforced C250	
								VODALAND	

8 7 6 5 4 3 2 1