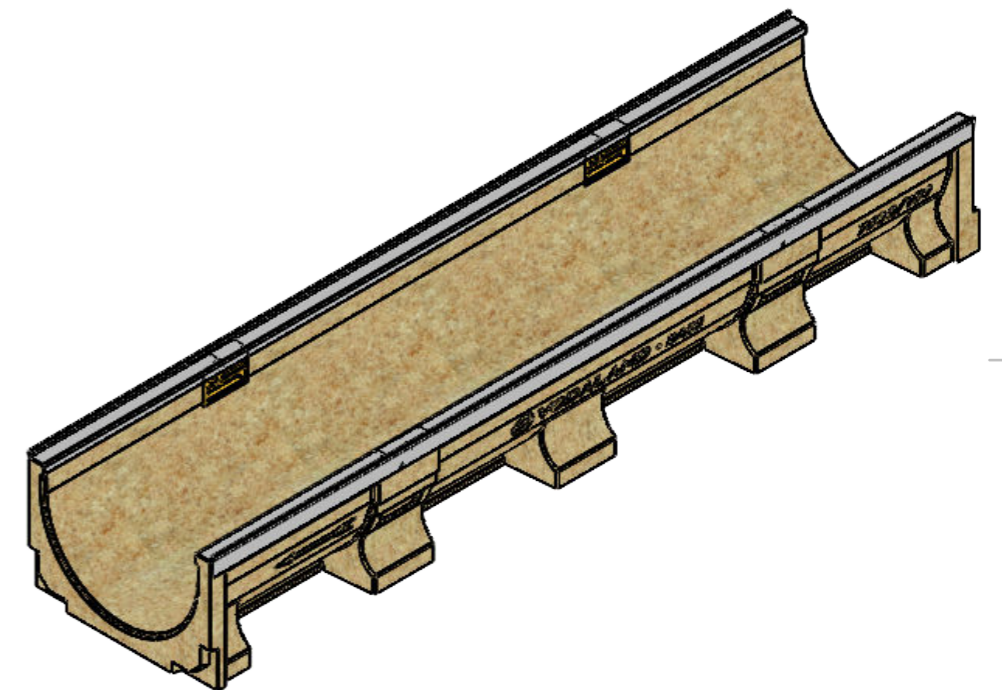
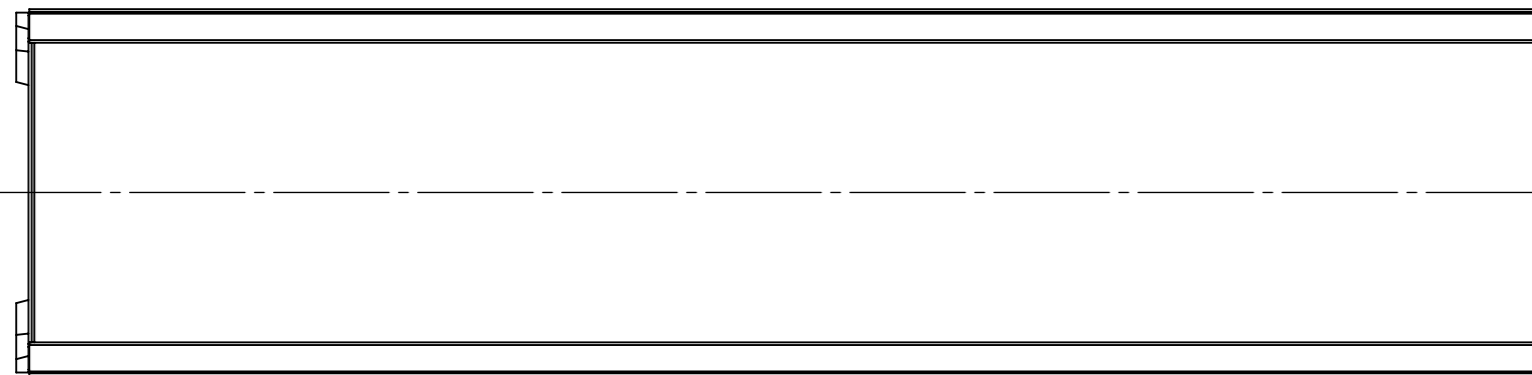
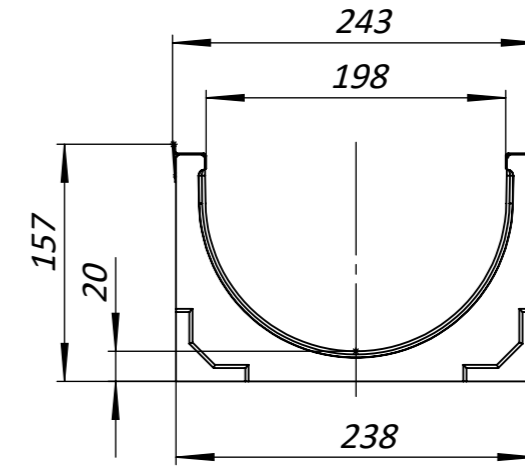
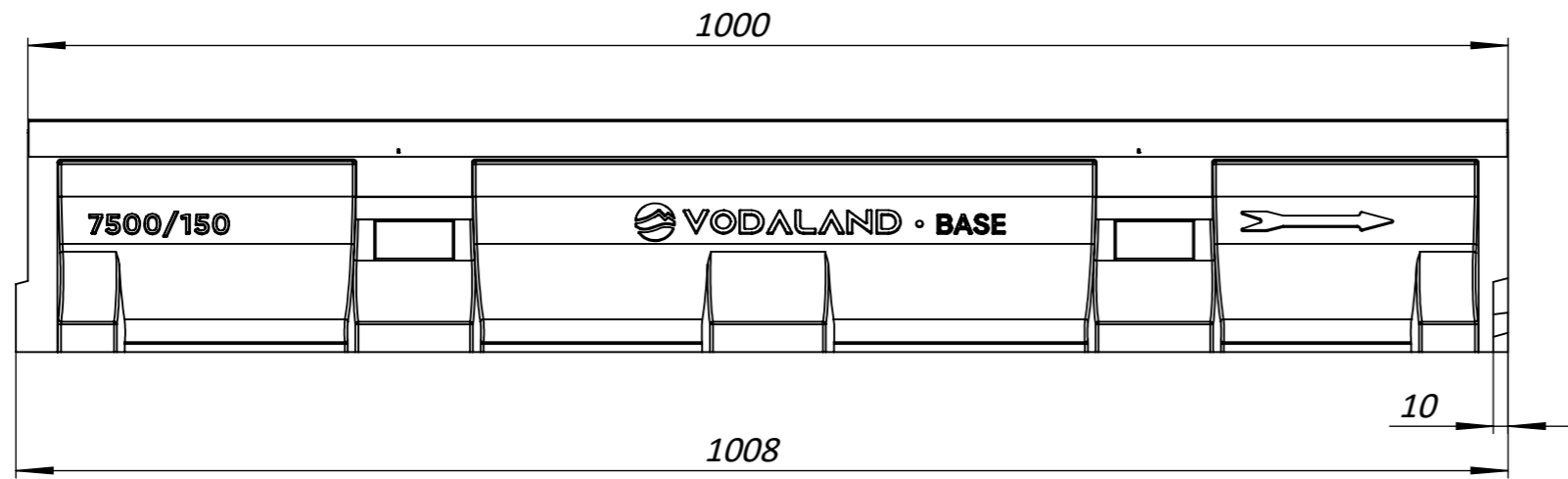



1. Dimensions for reference
2. Delivery and packaging are carried out in accordance with the terms of the contract
3. The manufacturer reserves the right, without notice to the consumer, to make changes to the design of the products for improvement of their technological and operational parameters, which will not affect the quality and properties of the product
4. Deviation of the actual weight of the nominal can be up to 10%.

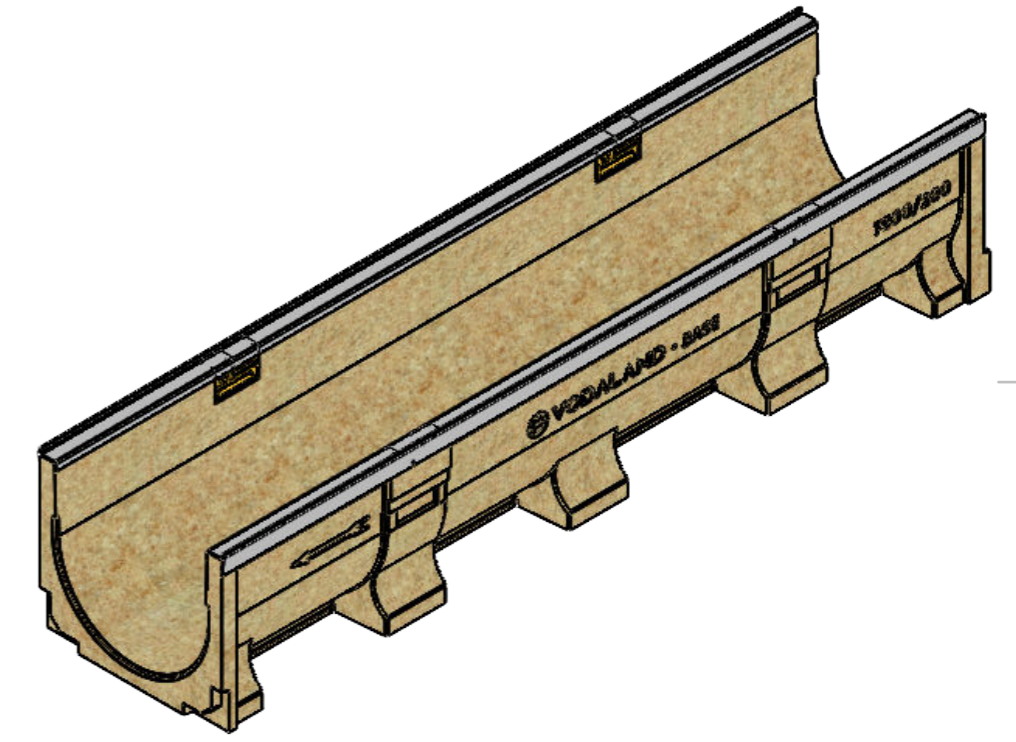
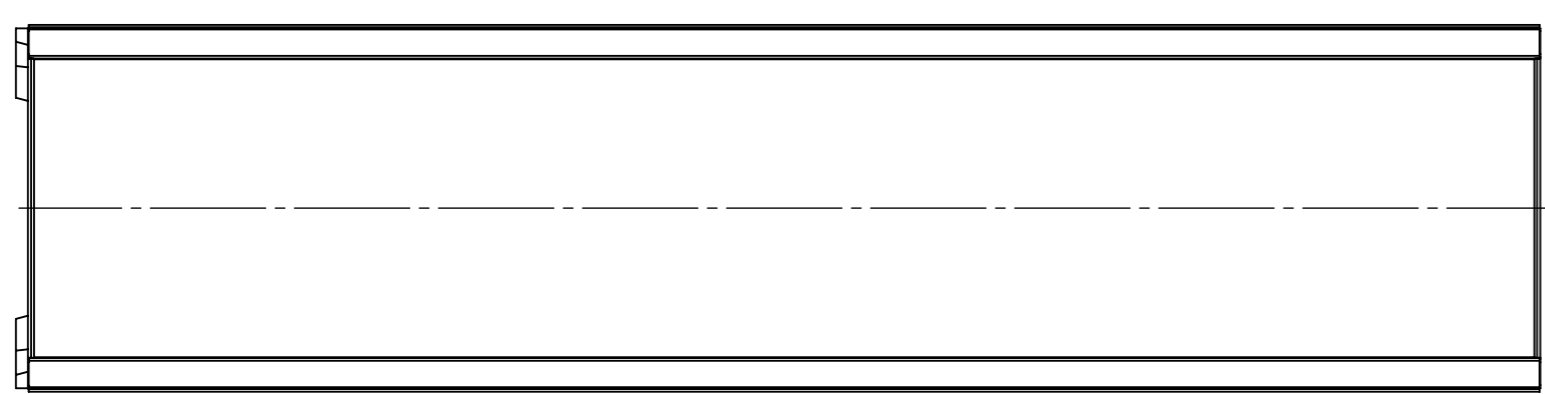
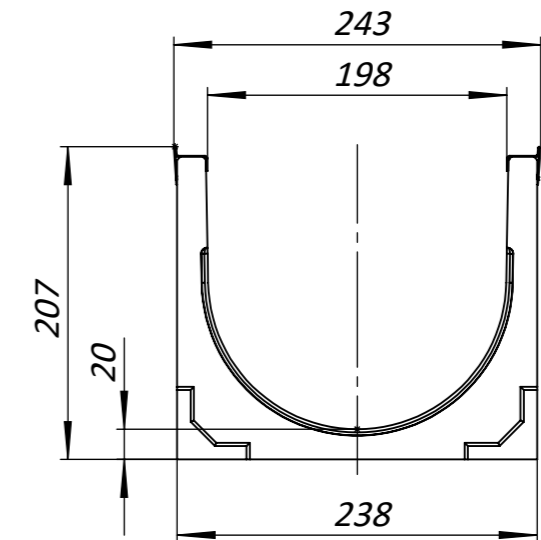
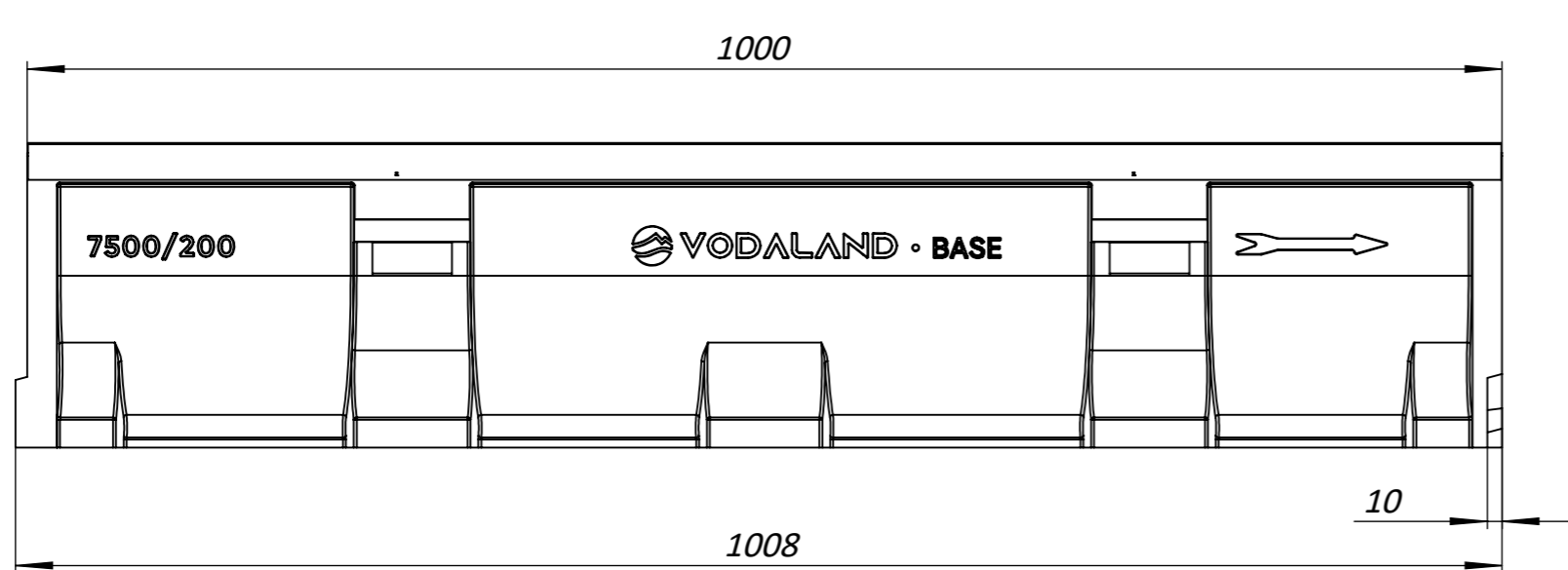
UNLESS OTHERWISE SPECIFIED: DIMENSIONS ARE IN MILLIMETERS SURFACE FINISH: TOLERANCES: ISO 2768 - C LINEAR: ANGULAR:		FINISH:		DEBURR AND BREAK SHARP EDGES		DO NOT SCALE DRAWING		REVISION	
						TITLE: Polymer Concrete Drain Channel Base DN200 H100 reinforced C250			
						MATERIAL: Polymer Concrete, Steel		ARTICLE: 750007/100	
						WEIGHT: 13.25 kg		SCALE: 1:5	
								SHEET 1 OF 1	
DRAWN		NAME		SIGNATURE		DATE			
CHK'D		B.MK				30.07.22			
APPV'D		B.VK							
MFG		B.IM							
Q.A									

A3



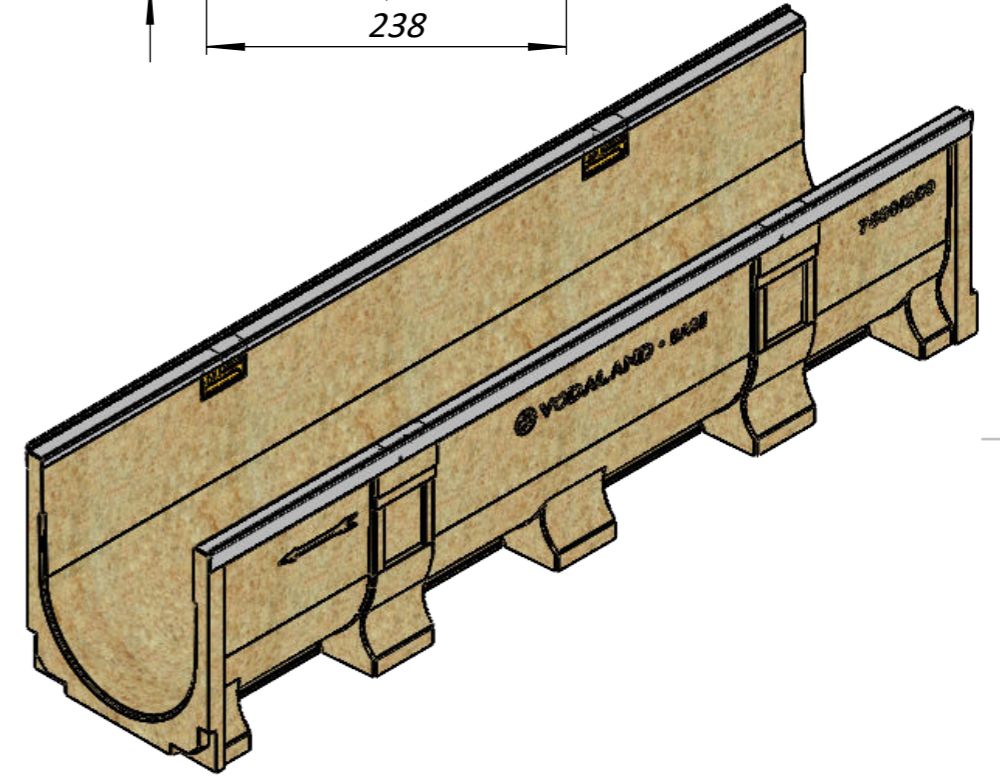
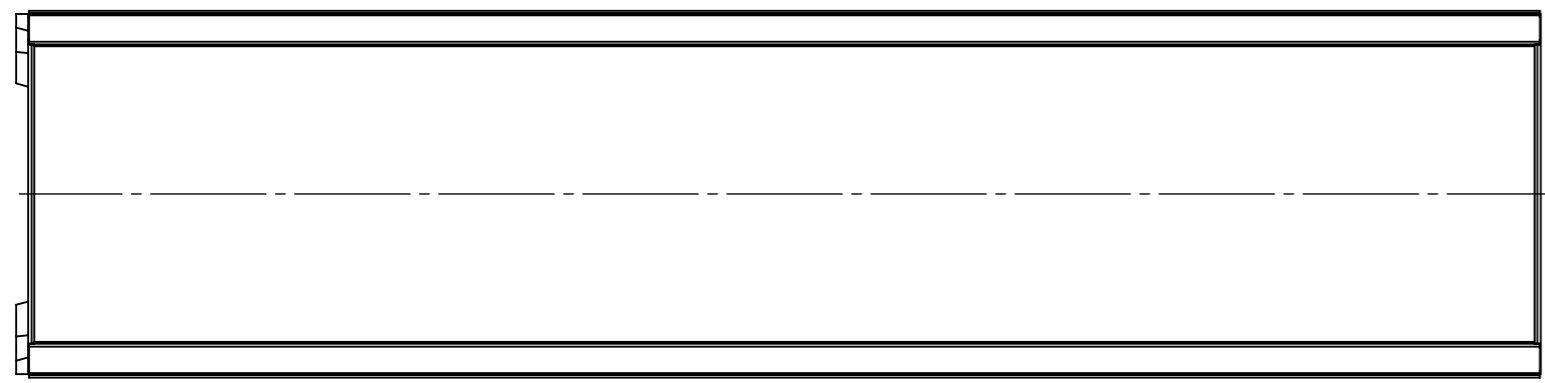
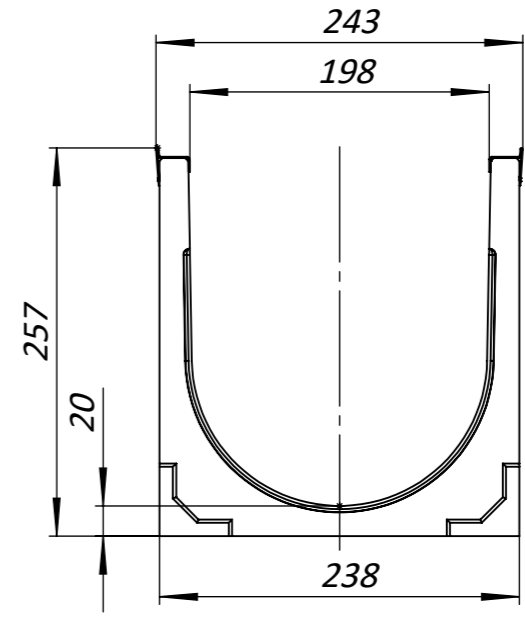
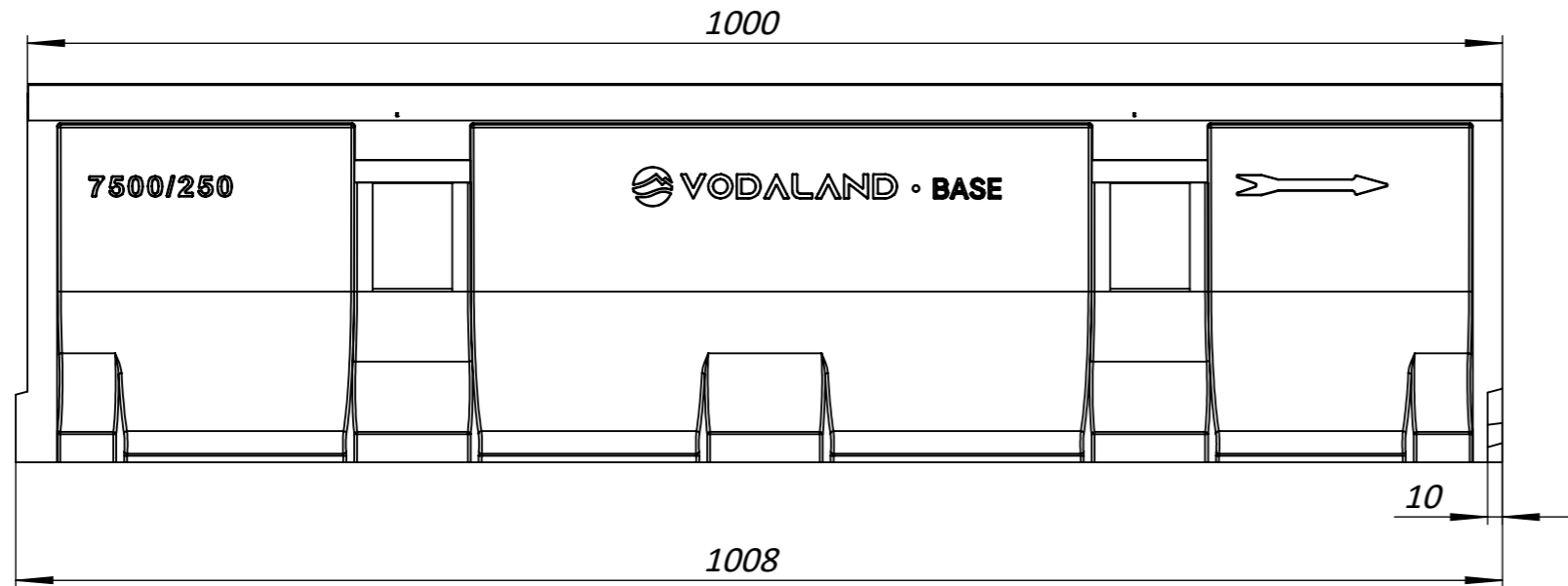
1. Dimensions for reference
2. Delivery and packaging are carried out in accordance with the terms of the contract
3. The manufacturer reserves the right, without notice to the consumer, to make changes to the design of the products for improvement of their technological and operational parameters, which will not affect the quality and properties of the product
4. Deviation of the actual weight of the nominal can be up to 10%.

UNLESS OTHERWISE SPECIFIED: DIMENSIONS ARE IN MILLIMETERS SURFACE FINISH: TOLERANCES: ISO 2768 - C LINEAR: ANGULAR:		FINISH:		DEBURR AND BREAK SHARP EDGES		DO NOT SCALE DRAWING		REVISION	
									
								TITLE: Polymer Concrete Drain Channel Base DN200 H150 reinforced C250	
	NAME	SIGNATURE	DATE			ARTICLE: 750007/150		A3	
DRAWN	B.MK		30.07.22			MATERIAL: Polymer Concrete, Steel			
CHK'D	B.VK					WEIGHT: 17.38 kg			
APPV'D	B.IM					SCALE: 1:5		SHEET 1 OF 1	
MFG									
Q.A									



1. Dimensions for reference
2. Delivery and packaging are carried out in accordance with the terms of the contract
3. The manufacturer reserves the right, without notice to the consumer, to make changes to the design of the products for improvement of their technological and operational parameters, which will not affect the quality and properties of the product
4. Deviation of the actual weight of the nominal can be up to 10%.

UNLESS OTHERWISE SPECIFIED: DIMENSIONS ARE IN MILLIMETERS SURFACE FINISH: TOLERANCES: ISO 2768 - C LINEAR: ANGULAR:		FINISH:		DEBURR AND BREAK SHARP EDGES		DO NOT SCALE DRAWING		REVISION		
						TITLE: Polymer Concrete Drain Channel Base DN200 H200 reinforced C250				
						MATERIAL: Polymer Concrete, Steel		ARTICLE: 750007/200		A3
						WEIGHT: 20.14 kg		SCALE: 1:5		SHEET 1 OF 1



1. Dimensions for reference
2. Delivery and packaging are carried out in accordance with the terms of the contract
3. The manufacturer reserves the right, without notice to the consumer, to make changes to the design of the products for improvement of their technological and operational parameters, which will not affect the quality and properties of the product
4. Deviation of the actual weight of the nominal can be up to 10%.

UNLESS OTHERWISE SPECIFIED: DIMENSIONS ARE IN MILLIMETERS SURFACE FINISH: TOLERANCES: ISO 2768 - C LINEAR: ANGULAR:		FINISH:	DEBURR AND BREAK SHARP EDGES		DO NOT SCALE DRAWING	REVISION
	NAME	SIGNATURE	DATE	TITLE: Polymer Concrete Drain Channel Base DN200 H250 reinforced C250		
DRAWN	B.MK		30.07.22			
CHK'D	B.VK					
APPV'D	B.IM					
MFG						
Q.A				MATERIAL: Polymer Concrete, Steel	ARTICLE: 750007/250	
				WEIGHT: 23.69 kg	SCALE: 1:5	SHEET 1 OF 1

A3