
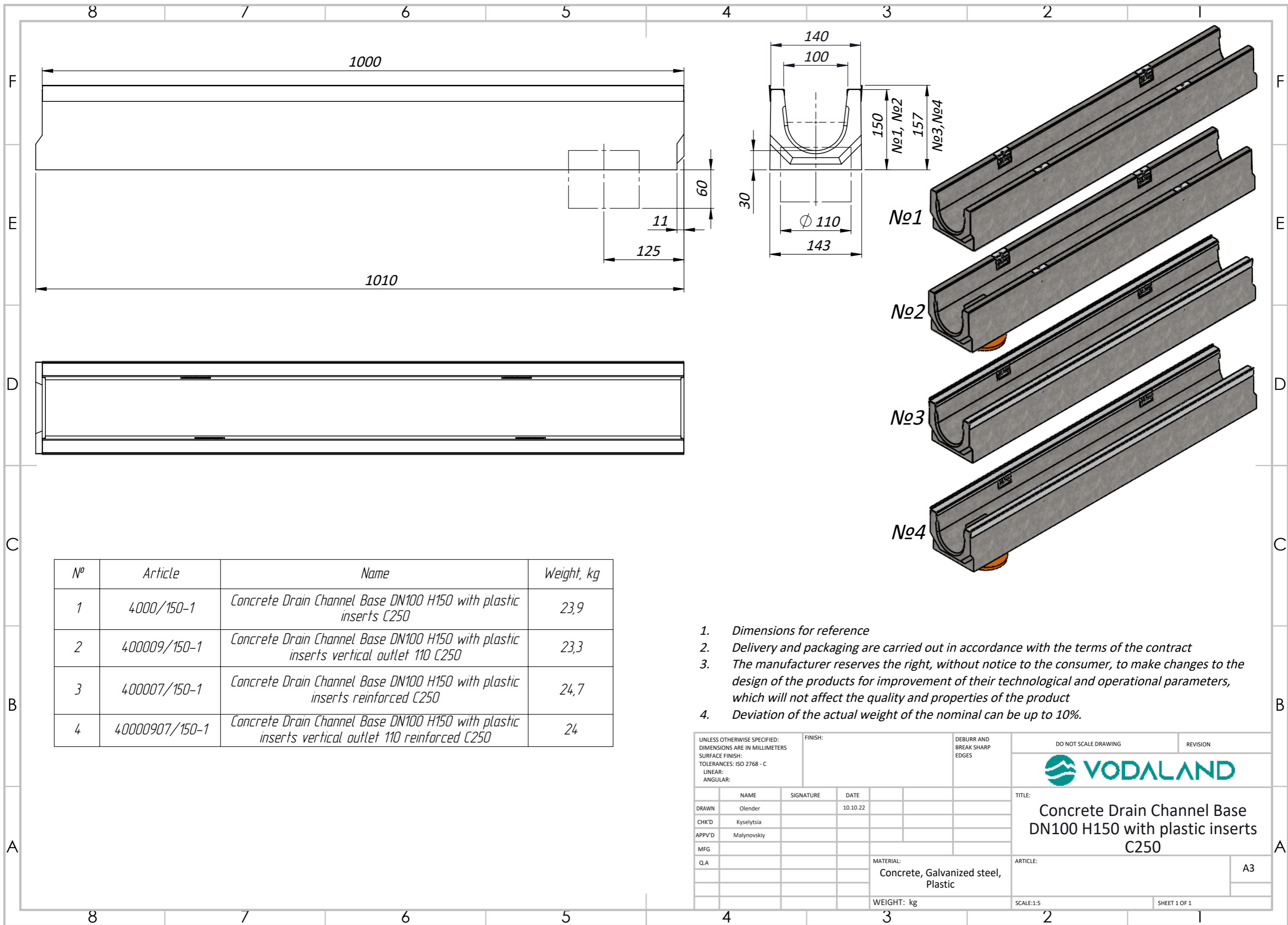


N ^o	Article	Name	Weight, kg
1	4000/125-1	Concrete Drain Channel Base DN100 H125 with plastic inserts C250	23,9
2	400009/125-1	Concrete Drain Channel Base DN100 H125 with plastic inserts vertical outlet 110 C250	23,3
3	400007/125-1	Concrete Drain Channel Base DN100 H125 with plastic inserts reinforced C250	24,7
4	40000907/125-1	Concrete Drain Channel Base DN100 H125 with plastic inserts vertical outlet 110 reinforced C250	24


1. Dimensions for reference
2. Delivery and packaging are carried out in accordance with the terms of the contract
3. The manufacturer reserves the right, without notice to the consumer, to make changes to the design of the products for improvement of their technological and operational parameters, which will not affect the quality and properties of the product
4. Deviation of the actual weight of the nominal can be up to 10%.

UNLESS OTHERWISE SPECIFIED: DIMENSIONS ARE IN MILLIMETERS SURFACE FINISH: TOLERANCES: ISO 2768 - C LINEAR: ANGULAR:		FINISH:	DEBURR AND BREAK SHARP EDGES	DO NOT SCALE DRAWING	REVISION
DRAWN: Olender		SIGNATURE	DATE: 10.10.22	 TITLE: Concrete Drain Channel Base DN100 H125 with plastic inserts C250	
CHK'D: Kyselytsia					
APPV'D: Malynovskiy					
MFG:					
Q.A:				ARTICLE:	
		MATERIAL: Concrete, Galvanized steel, Plastic		A3	
		WEIGHT: kg		SCALE: 1:5	
				SHEET 1 OF 1	



N ^o	Article	Name	Weight, kg
1	4000/150-1	Concrete Drain Channel Base DN100 H150 with plastic inserts C250	23,9
2	400009/150-1	Concrete Drain Channel Base DN100 H150 with plastic inserts vertical outlet 110 C250	23,3
3	400007/150-1	Concrete Drain Channel Base DN100 H150 with plastic inserts reinforced C250	24,7
4	40000907/150-1	Concrete Drain Channel Base DN100 H150 with plastic inserts vertical outlet 110 reinforced C250	24

1. Dimensions for reference
2. Delivery and packaging are carried out in accordance with the terms of the contract
3. The manufacturer reserves the right, without notice to the consumer, to make changes to the design of the products for improvement of their technological and operational parameters, which will not affect the quality and properties of the product
4. Deviation of the actual weight of the nominal can be up to 10%.

UNLESS OTHERWISE SPECIFIED: DIMENSIONS ARE IN MILLIMETERS SURFACE FINISH: TOLERANCES: ISO 2768 - C LINEAR: ANGULAR:		FINISH:	DEBURR AND BREAK SHARP EDGES		DO NOT SCALE DRAWING	REVISION
DRAWN: Olender		SIGNATURE:		DATE: 10.10.22		 TITLE: Concrete Drain Channel Base DN100 H150 with plastic inserts C250 ARTICLE: A3
CHK'D: Kyselytsia		SIGNATURE:		DATE:		
APPV'D: Malynovskiy		SIGNATURE:		DATE:		
MFG:		SIGNATURE:		DATE:		
Q.A:		SIGNATURE:		DATE:		
MATERIAL: Concrete, Galvanized steel, Plastic		WEIGHT: kg		SCALE: 1:5		SHEET 1 OF 1

8 7 6 5 4 3 2 1

F

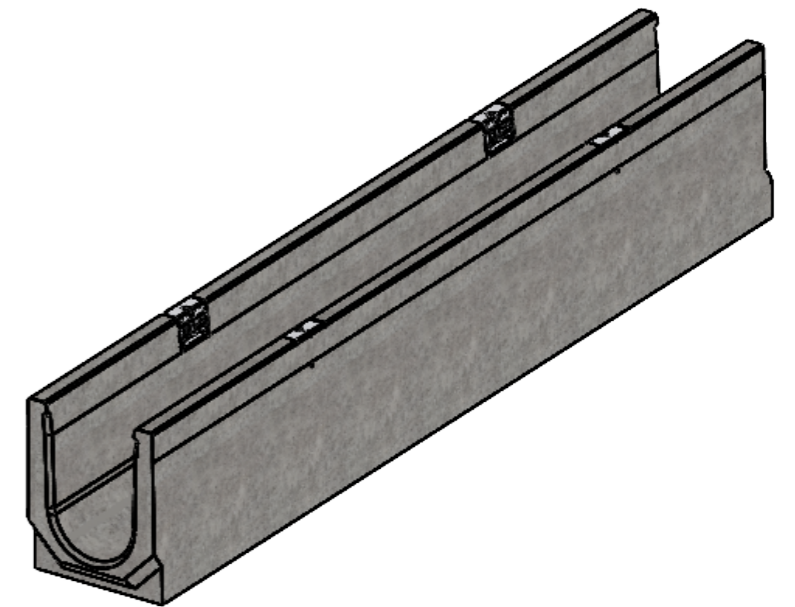
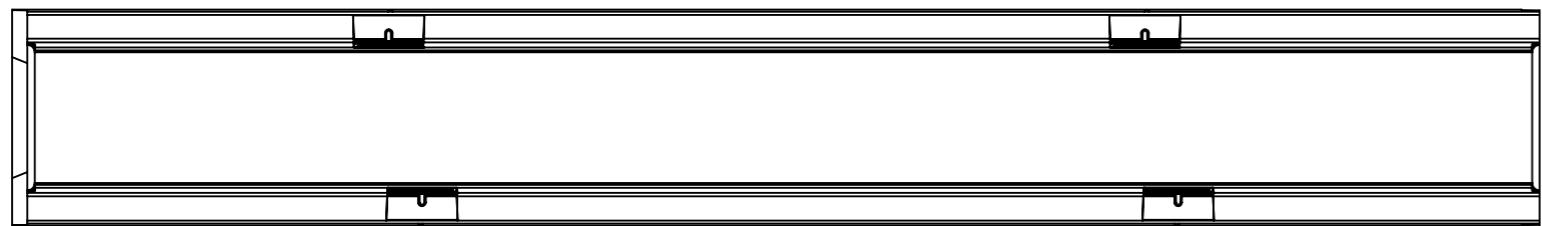
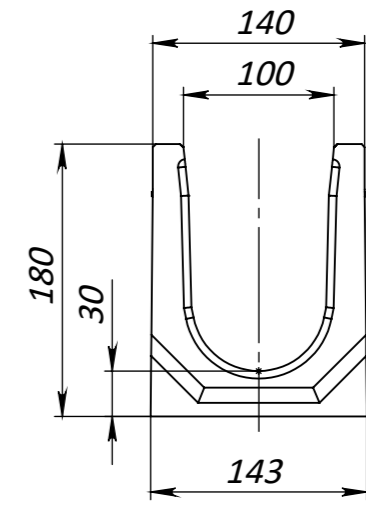
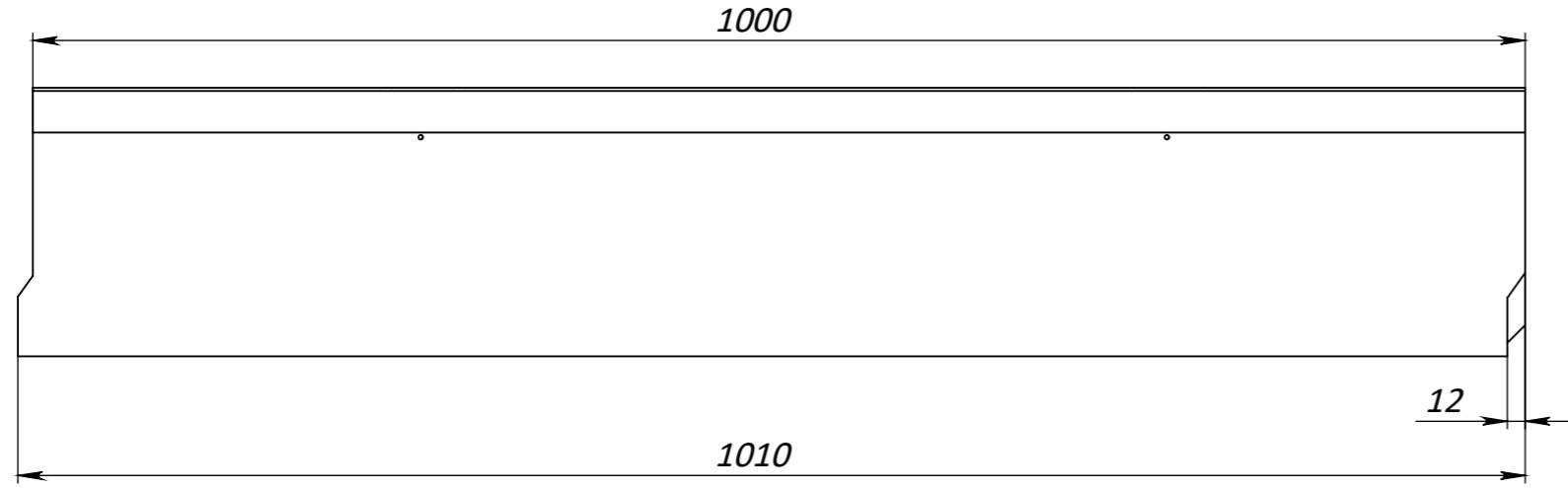
E

D


C

B

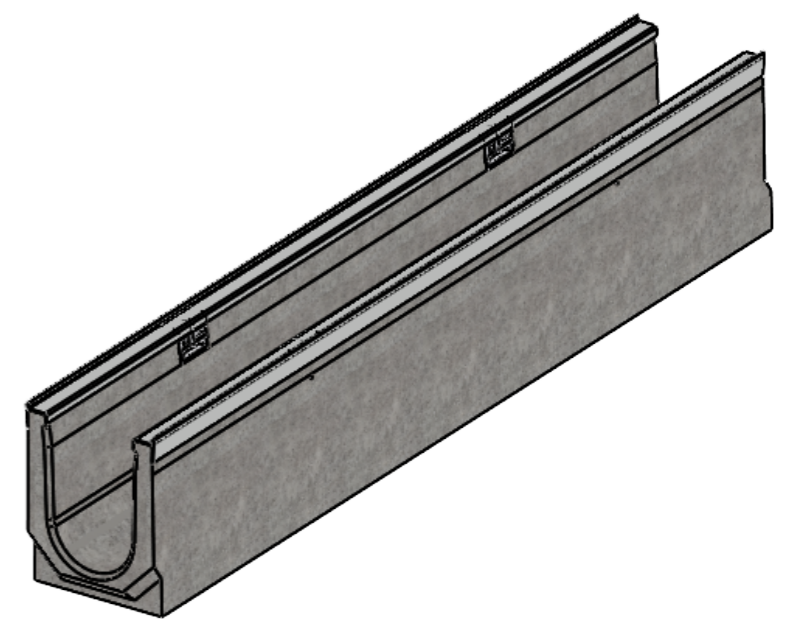
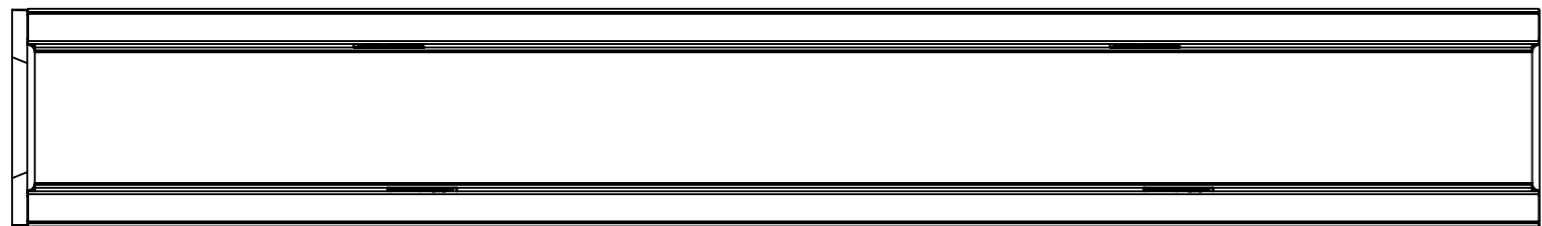
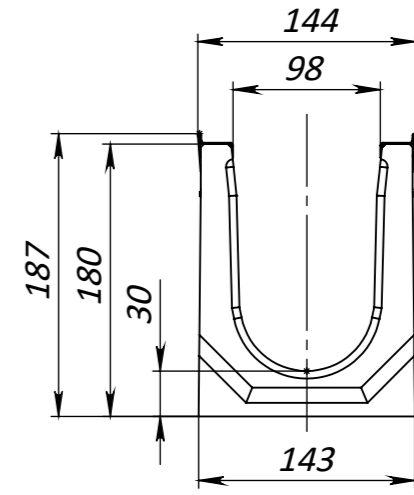
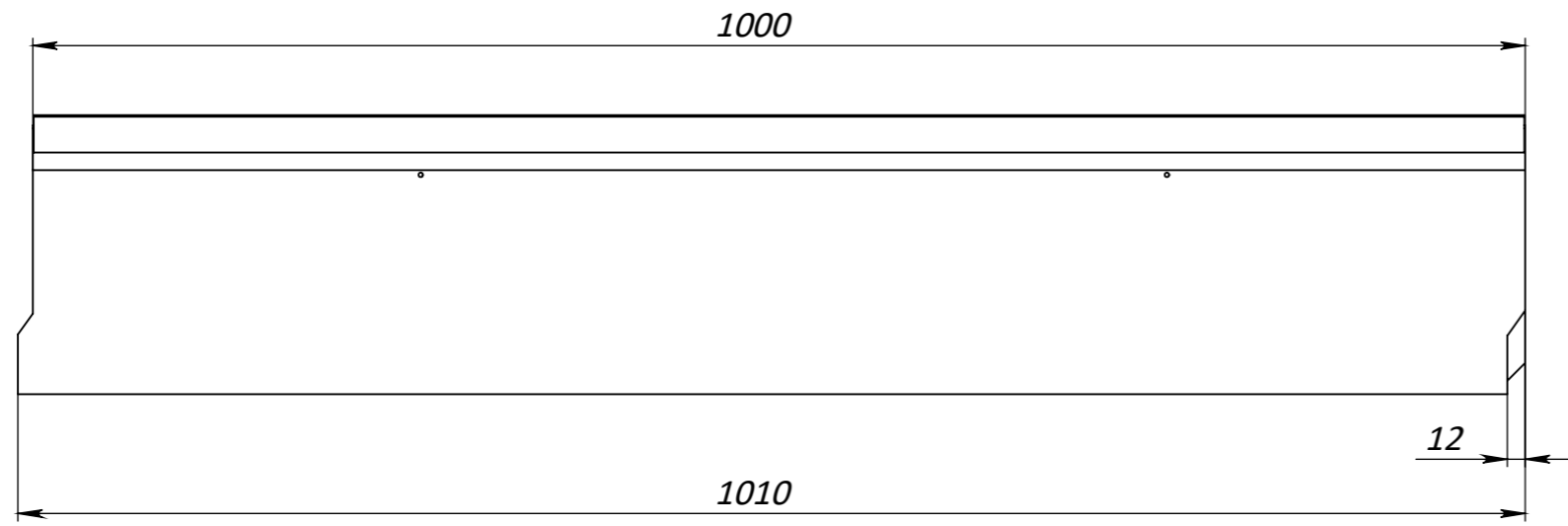
A




1. Dimensions for reference
2. Delivery and packaging are carried out in accordance with the terms of the contract
3. The manufacturer reserves the right, without notice to the consumer, to make changes to the design of the products for improvement of their technological and operational parameters, which will not affect the quality and properties of the product
4. Deviation of the actual weight of the nominal can be up to 10%.

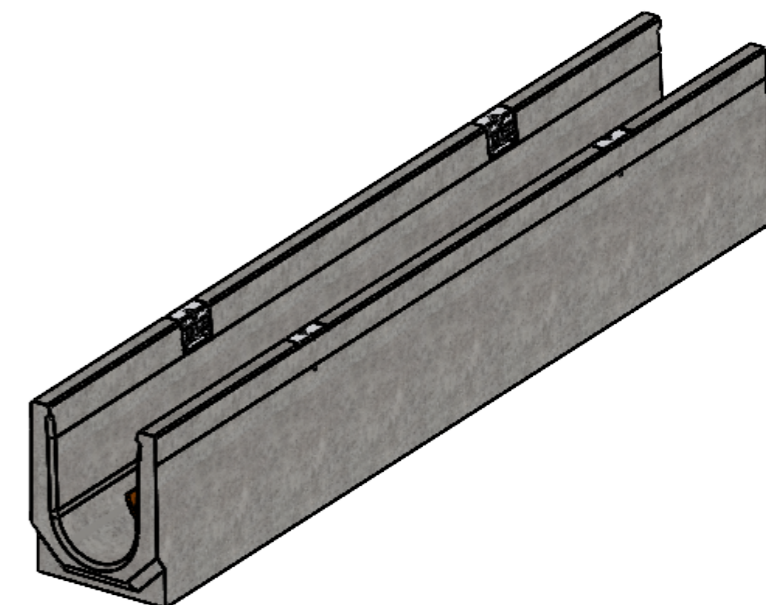
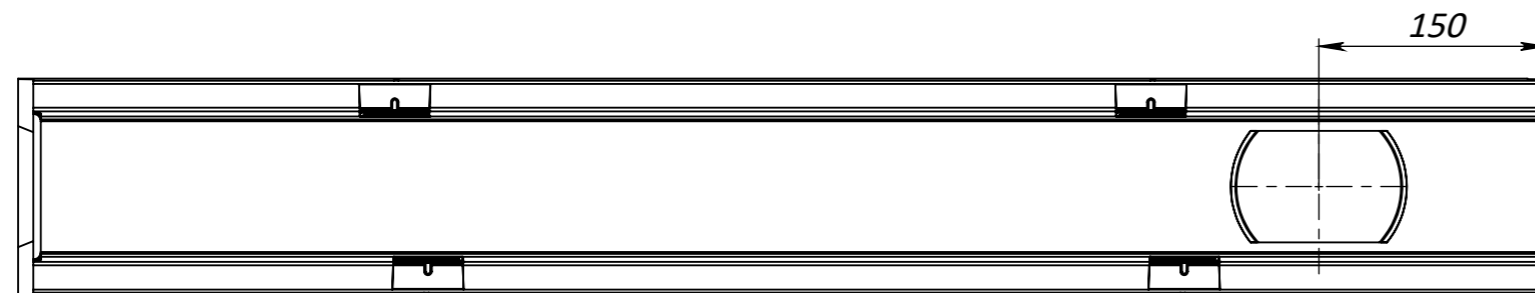
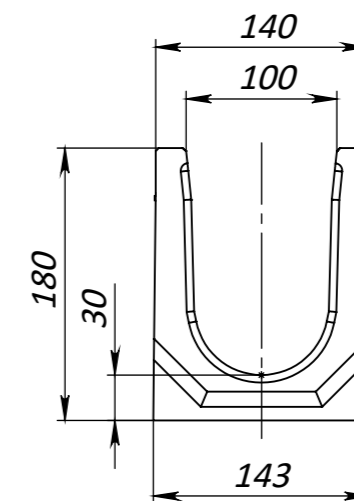
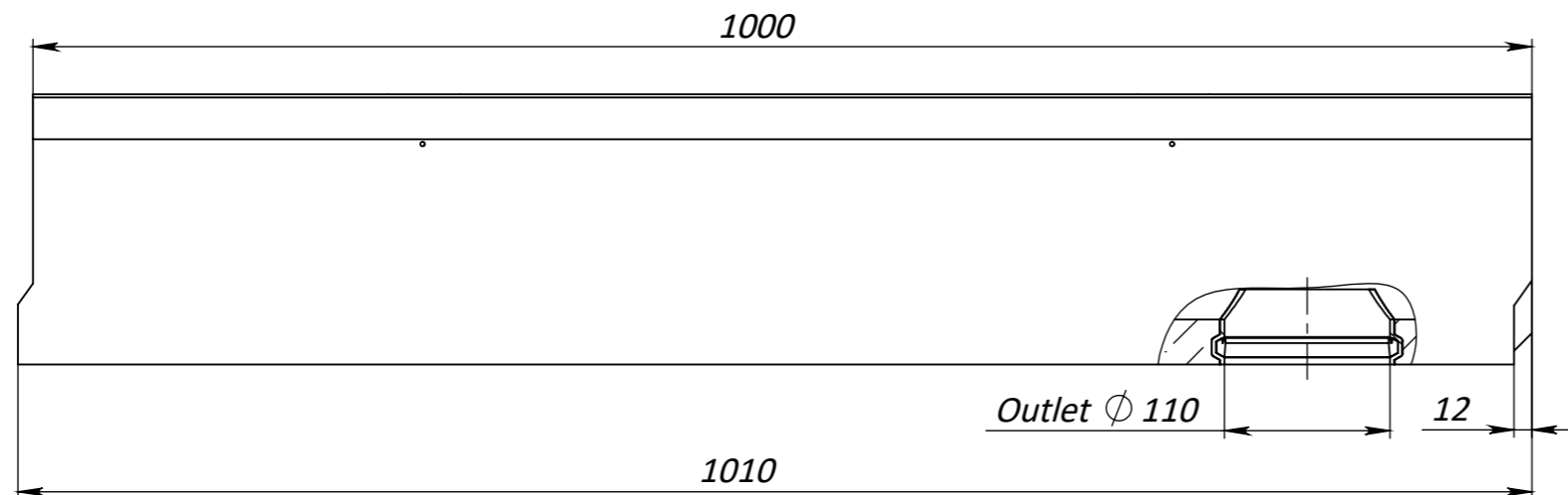
UNLESS OTHERWISE SPECIFIED: DIMENSIONS ARE IN MILLIMETERS SURFACE FINISH: TOLERANCES: ISO 2768 - C LINEAR: ANGULAR:			FINISH:		DEBURR AND BREAK SHARP EDGES		DO NOT SCALE DRAWING		REVISION	
										
									TITLE:	
									Concrete Drain Channel Base DN100 H180 with plastic inserts C250	
									ARTICLE:	
									4000/180-1	
									A3	
									SCALE: 1:5	
									SHEET 1 OF 1	

8 7 6 5 4 3 2 1




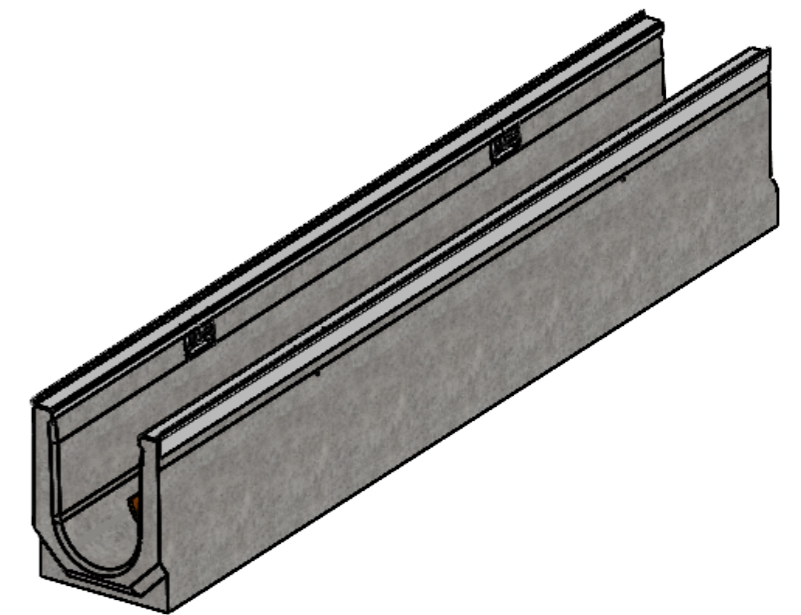
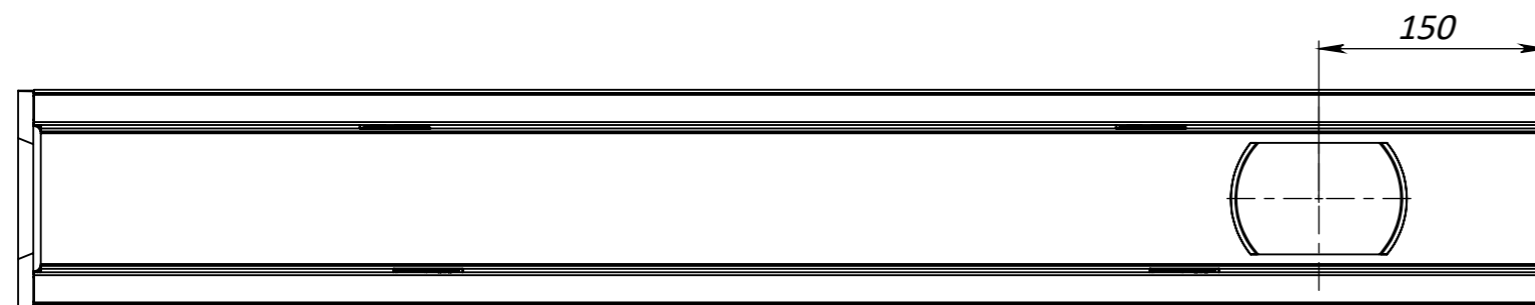
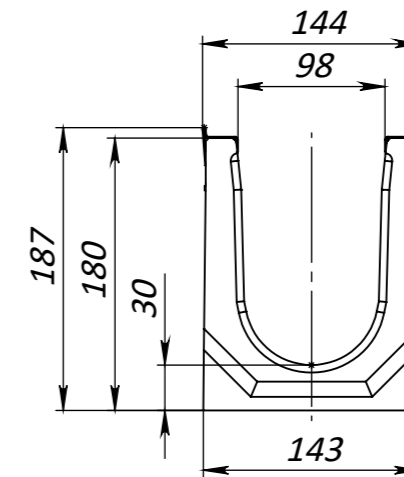
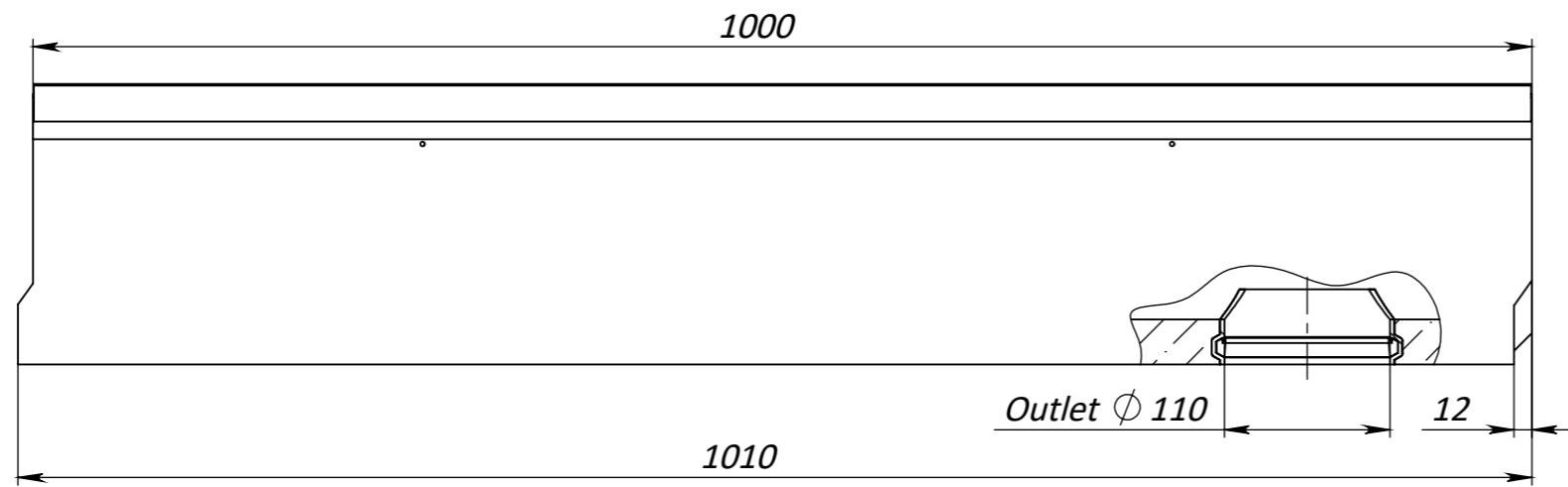
1. *Dimensions for reference*
2. *Delivery and packaging are carried out in accordance with the terms of the contract*
3. *The manufacturer reserves the right, without notice to the consumer, to make changes to the design of the products for improvement of their technological and operational parameters, which will not affect the quality and properties of the product*
4. *Deviation of the actual weight of the nominal can be up to 10%.*

UNLESS OTHERWISE SPECIFIED: DIMENSIONS ARE IN MILLIMETERS SURFACE FINISH: TOLERANCES: ISO 2768 - C LINEAR: ANGULAR:				FINISH:		DEBURR AND BREAK SHARP EDGES		DO NOT SCALE DRAWING		REVISION	
								 TITLE: Concrete Drain Channel Base DN100 H180 with plastic inserts reinforced C250			
								MATERIAL:		400007/180-1	
								WEIGHT: 29.00 kg		SCALE: 1:5	
										SHEET 1 OF 1	




1. *Dimensions for reference*
2. *Delivery and packaging are carried out in accordance with the terms of the contract*
3. *The manufacturer reserves the right, without notice to the consumer, to make changes to the design of the products for improvement of their technological and operational parameters, which will not affect the quality and properties of the product*
4. *Deviation of the actual weight of the nominal can be up to 10%.*

UNLESS OTHERWISE SPECIFIED: DIMENSIONS ARE IN MILLIMETERS SURFACE FINISH: TOLERANCES: ISO 2768 - C LINEAR: ANGULAR:			FINISH:		DEBURR AND BREAK SHARP EDGES		DO NOT SCALE DRAWING		REVISION	
							 TITLE: Concrete Drain Channel Base DN100 H180 with plastic inserts vertical outlet 110 C250			
DRAWN		Kozak	SIGNATURE		DATE				12.06.23	
CHK'D		Kyselytsia								
APPV'D		Malynovskiy								
MFG										
Q.A					MATERIAL:		Concrete		ARTICLE:	
					WEIGHT: 27.15 kg		SCALE: 1:5		400009/180-1	
							SHEET 1 OF 1		A3	



1. *Dimensions for reference*
2. *Delivery and packaging are carried out in accordance with the terms of the contract*
3. *The manufacturer reserves the right, without notice to the consumer, to make changes to the design of the products for improvement of their technological and operational parameters, which will not affect the quality and properties of the product*
4. *Deviation of the actual weight of the nominal can be up to 10%.*

UNLESS OTHERWISE SPECIFIED: DIMENSIONS ARE IN MILLIMETERS SURFACE FINISH: TOLERANCES: ISO 2768 - C LINEAR: ANGULAR:			FINISH:		DEBURR AND BREAK SHARP EDGES		DO NOT SCALE DRAWING		REVISION	
										
									TITLE: Concrete Drain Channel Base DN100 H180 with plastic inserts vertical outlet 110 reinforced C250	
									ARTICLE: 40000907/180-1	
									A3	
					MATERIAL: Concrete					
					WEIGHT: 28.10 kg		SCALE: 1:5		SHEET 1 OF 1	

F
E
D
C
B
A

F
E
D
C
B
A

8 7 6 5 4 3 2 1

8 7 6 5 4 3 2 1